

Datasheet for ABIN948956
anti-PROCR antibody (AA 1-238)



[Go to Product page](#)

1 Image

Overview

Quantity:	50 µg
Target:	PROCR
Binding Specificity:	AA 1-238
Reactivity:	Human
Host:	Mouse
Clonality:	Polyclonal
Conjugate:	This PROCR antibody is un-conjugated
Application:	Western Blotting (WB)

Product Details

Purpose:	Mouse polyclonal antibody raised against a full-length human PROCR protein.
Immunogen:	PROCR (NP_006395.2, 1 a.a. ~ 238 a.a) full-length human protein.
Sequence:	MLTTLLPILL LSGWAFCSQD ASDGLQLRHM LQISYFRDPY HWVYQGNASL GGHLTHVLEG PDTNTTIIQL QPLQEPESWA RTQSGLQSYL LQFHGLVRLV HQERTLAFPL TIRCFGCEL PPEGSRAHVF FEVAVNGSSF VSRPERALW QADTQVTSGV VTFTLQQLNA YNRTRYELRE FLEDTCVQYV QKHISAENTK GSQTSRSYTS LVLGVLVGSF IIAGVAVGIF LCTGGRRC
Cross-Reactivity:	Human
Characteristics:	Antibody reactive against mammalian transfected lysate.

Target Details

Target:	PROCR
---------	-------

Target Details

Alternative Name:	PROCR (PROCR Products)
Background:	Full Gene Name: protein C receptor, endothelial (EPCR) Synonyms: CCCA,CCD41,CD201,EPCR,MGC23024,bA4204.2
Gene ID:	10544
NCBI Accession:	NM_006404

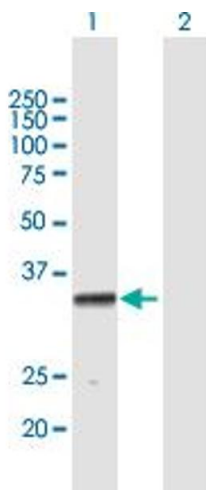
Application Details

Application Notes:	Optimal working dilution should be determined by the investigator.
Restrictions:	For Research Use only

Handling

Buffer:	In 1x PBS, pH 7.4
Handling Advice:	Aliquot to avoid repeated freezing and thawing.
Storage:	-20 °C
Storage Comment:	Store at -20°C or lower. Aliquot to avoid repeated freezing and thawing.

Images



Western Blotting

Image 1. Western Blot analysis of PROCR expression in transfected 293T cell line by PROCR MaxPab polyclonal antibody.

Lane 1: PROCR transfected lysate(26.18 kDa).

Lane 2: Non-transfected lysate.