



[Go to Product page](#)

Datasheet for ABIN948963
anti-MRPL28 antibody (AA 1-256)

2 Images

Overview

Quantity:	50 µg
Target:	MRPL28
Binding Specificity:	AA 1-256
Reactivity:	Human
Host:	Mouse
Clonality:	Polyclonal
Conjugate:	This MRPL28 antibody is un-conjugated
Application:	Western Blotting (WB)

Product Details

Purpose:	Mouse polyclonal antibody raised against a full-length human MRPL28 protein.
Immunogen:	MRPL28 (NP_006419.2, 1 a.a. ~ 256 a.a) full-length human protein.
Sequence:	MPLHKYPVWL WKRLQLREGI CSRLPGHYLR SLEEERTPTP VHYPHGAKE KINPKNGQRE RVEDVPIPIY FPPESQRGLW GGEGWILGQI YANNDKLSKR LKKVWKPQLF EREFYSEILD KKFTVTVTMR TLDLIDEAYG LDFYILKTPK EDLCSKFGMD LKRGMLLRLA RQDPQLHPED PERRAAIYDK YKEFAIPEEE AEWVGLTLEE AIEKQRLLEE KDPVPLFKIY VAELIQQLQQ QALSEPAVVQ KRASGQ
Cross-Reactivity:	Human
Characteristics:	Antibody reactive against mammalian transfected lysate.

Target Details

Target:	MRPL28
Alternative Name:	MRPL28 (MRPL28 Products)
Background:	Full Gene Name: mitochondrial ribosomal protein L28 Synonyms: MAAT1,MGC8499,p15
Gene ID:	10573
NCBI Accession:	NM_006428
Pathways:	Mitotic G1-G1/S Phases

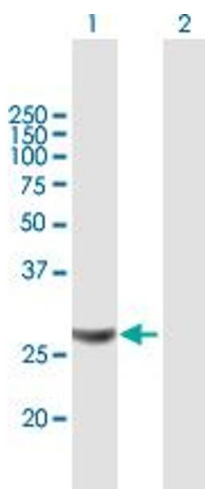
Application Details

Application Notes:	Optimal working dilution should be determined by the investigator.
Restrictions:	For Research Use only

Handling

Buffer:	In 1x PBS, pH 7.4
Handling Advice:	Aliquot to avoid repeated freezing and thawing.
Storage:	-20 °C
Storage Comment:	Store at -20°C or lower. Aliquot to avoid repeated freezing and thawing.

Images

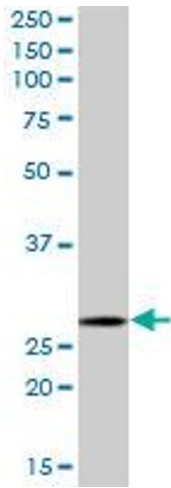


Western Blotting

Image 1. Western Blot analysis of MRPL28 expression in transfected 293T cell line by MRPL28 MaxPab polyclonal antibody.

Lane 1: MRPL28 transfected lysate(28.16 kDa).

Lane 2: Non-transfected lysate.



Western Blotting

Image 2. MRPL28 MaxPab polyclonal antibody. Western Blot analysis of MRPL28 expression in human placenta.