



Datasheet for ABIN948974
anti-MTX2 antibody (AA 1-263)



[Go to Product page](#)

1 Image

Overview

Quantity:	50 µg
Target:	MTX2
Binding Specificity:	AA 1-263
Reactivity:	Human
Host:	Mouse
Clonality:	Polyclonal
Conjugate:	This MTX2 antibody is un-conjugated
Application:	Western Blotting (WB)

Product Details

Purpose:	Mouse polyclonal antibody raised against a full-length human MTX2 protein.
Immunogen:	MTX2 (NP_006545.1, 1 a.a. ~ 263 a.a) full-length human protein.
Sequence:	MSLVAEAFVS QIAAAEPWPE NATLYQQLKG EQILLSDNAA SLAVQAFLQM CNLPIKVVCR ANA EYMSPSG KVPFIHVG NQ VVSELGPVQ FVKAKGHSL S DGLEEVQKAE MKAYMELVNN MLLTAELYLQ WCDEATVGEI THARYGSPYP WPLNHILAYQ KQWEVKRKM K AIGWGKKTLD QVLEDVDQCC QALSQRLGTQ PYFFNKQPT E LDALVFGHLY TILTTQLTND ELSEKVKNYS NLLAFCRRIE QHYFEDRGKG RLS
Cross-Reactivity:	Human
Characteristics:	Antibody reactive against mammalian transfected lysate.

Target Details

Target:	MTX2
Alternative Name:	MTX2 (MTX2 Products)
Background:	Full Gene Name: metaxin 2 Synonyms: MGC111067
Gene ID:	10651
NCBI Accession:	NM_006554

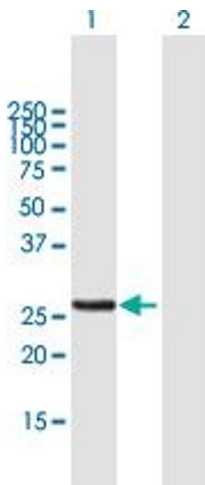
Application Details

Application Notes:	Optimal working dilution should be determined by the investigator.
Restrictions:	For Research Use only

Handling

Buffer:	In 1x PBS, pH 7.4
Handling Advice:	Aliquot to avoid repeated freezing and thawing.
Storage:	-20 °C
Storage Comment:	Store at -20°C or lower. Aliquot to avoid repeated freezing and thawing.

Images



Western Blotting

Image 1. Western Blot analysis of MTX2 expression in transfected 293T cell line by MTX2 MaxPab polyclonal antibody.

Lane 1: MTX2 transfected lysate(28.93 KDa).

Lane 2: Non-transfected lysate.