



[Go to Product page](#)

Datasheet for ABIN948978

## anti-CELF1 antibody (AA 1-483)

### 3 Images

#### Overview

Quantity:	50 µg
Target:	CELF1
Binding Specificity:	AA 1-483
Reactivity:	Human
Host:	Mouse
Clonality:	Polyclonal
Conjugate:	This CELF1 antibody is un-conjugated
Application:	Western Blotting (WB), Immunofluorescence (IF)

#### Product Details

Purpose:	Mouse polyclonal antibody raised against a full-length human CUGBP1 protein.
Immunogen:	CUGBP1 (NP_941989.1, 1 a.a. ~ 483 a.a) full-length human protein.
Sequence:	MNGTLDHPDQ PDLDAIKMFV GQVPRTWSEK DLRELFQYG AVYEINVLRD RSQNPPQSKG CCFVTFYTRK AALEAQNALH NMKVLPGMHM PIQMKNPADSE KNNAVEDRKL FIGMISKKCT ENDIRVMFSS FGQIEECRIL RGPDGLSRGC AFVTFTRAM AQTAKAMHQ AQTMEGCSSP MVVKFADTQK DKEQKRMAQQ LQQMQQISA ASVWGNLAGL NTLGPQYLAL LQQTASSGNL NTLSSLHPMG GLNAMQLQNL AALAAAASAA QNTPSGTNAL TTSSSPLSVL TSSAGSSPSS SSNSVNPPIA SLGALQTLAG ATAGLNVGSL AGMAALNGGL GSSGLSNGTG STMEALTQAY SGIQQYAAAA LPTLYNQNL TQQSIGAAGS QKEGPEGANL FIYHLPQEFQ DQDLLQMFMP FGNVVSAKVF IDKQTNLSKC FGFVSYDNPV SAQAAIQSMN GFQIGMKRLK VQLKRSKNDS KPY
Cross-Reactivity:	Human

## Product Details

---

Characteristics: Antibody reactive against mammalian transfected lysate.

## Target Details

---

Target: CELF1

Alternative Name: CUGBP1 ([CELF1 Products](#))

Background: Full Gene Name: CUG triplet repeat, RNA binding protein 1  
Synonyms: BRUNOL2,CUG-BP,CUGBP,NAB50,hNab50

Gene ID: 10658

NCBI Accession: [NM\\_198700](#)

Pathways: [Ribonucleoprotein Complex Subunit Organization](#)

## Application Details

---

Application Notes: Optimal working dilution should be determined by the investigator.

Restrictions: For Research Use only

## Handling

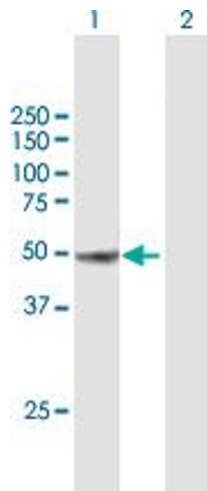
---

Buffer: In 1x PBS, pH 7.4

Handling Advice: Aliquot to avoid repeated freezing and thawing.

Storage: -20 °C

Storage Comment: Store at -20°C or lower. Aliquot to avoid repeated freezing and thawing.

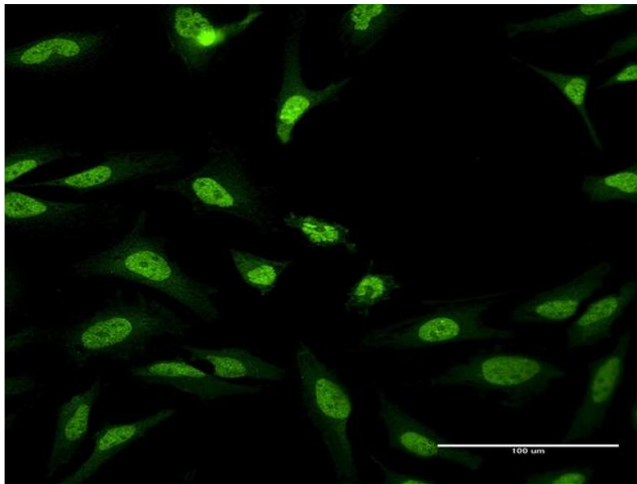


### Western Blotting

**Image 1.** Western Blot analysis of CUGBP1 expression in transfected 293T cell line by CUGBP1 MaxPab polyclonal antibody.

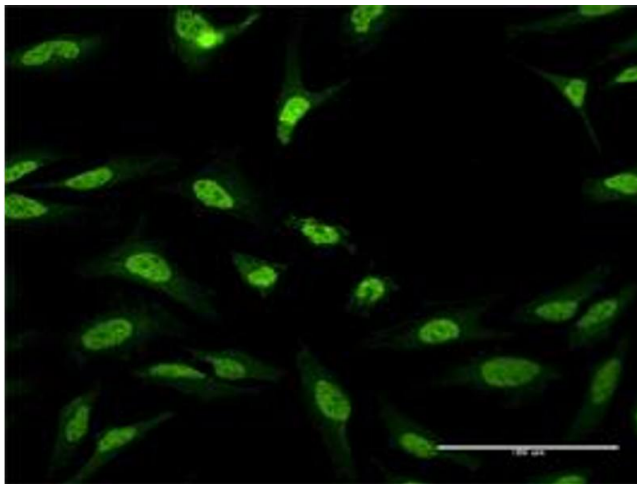
Lane 1: CUGBP1 transfected lysate(53.13 kDa).

Lane 2: Non-transfected lysate.



### Immunofluorescence

**Image 2.** Immunofluorescence of purified MaxPab antibody to CUGBP1 on HeLa cell. [antibody concentration 10 ug/ml]



### Immunofluorescence

**Image 3.** Immunofluorescence of purified MaxPab antibody to CUGBP1 on HeLa cell. (antibody concentration 10 μg/mL)