

Datasheet for ABIN948981
anti-CCT6B antibody (AA 1-530)



[Go to Product page](#)

2 Images

Overview

Quantity:	100 µL
Target:	CCT6B
Binding Specificity:	AA 1-530
Reactivity:	Human
Host:	Rabbit
Clonality:	Polyclonal
Conjugate:	This CCT6B antibody is un-conjugated
Application:	Western Blotting (WB), Immunoprecipitation (IP)

Product Details

Purpose:	Rabbit polyclonal antibody raised against a full-length human CCT6B protein.
Immunogen:	CCT6B (AAH27591.1, 1 a.a. ~ 530 a.a) full-length human protein.
Sequence:	MAAIKAVNSK AEVARAQAAL AVNICAARGL QDVLRTNLGP KGTMKMLASG AGDIKLTKDG NVLLDEMCIQ HPTASLIAKV ATAQDDVTGD GTTSNVLIIG ELLKQADLYI SEGLHPRIIA EGFEAAKIKI LEVLEEVKVT KEMKRKILLD VARTSLQTKV HAELADVLTE VVDSVLAVR RPGYPIDLFM VEIMEMKHKL GTDTKLIQGL VLDHGARHPD MKKRVEDAFI LICNVSLEYE KTEVNSGFFY KTAEEKEKLV KAERKFIEDR VQKIIDLKDK VCAQSNKGFV VINQKGIDPF SLDSLAKHGI VALRRAKRRN MERLSLACGG MAVNSFEDLT VDCLGHAGLV YEYTLGEEKF TFIEECVNPC SVTLLVKGPN KHTLTQVKDA IRDGLRAIKN AIEDGCMVPG AGAIEVAMAE ALVTYKNSIK GRARLGVQAF ADALLIIPKV LAQNAGYDPQ ETLVKVQAEH VESKQLVGVD LNTGEPMVAA DAGVWDNYCV KKQLLHSTV IATNILLVDE IMRAGMSSLK

Product Details

Cross-Reactivity:	Human
Characteristics:	Antibody reactive against mammalian transfected lysate.

Target Details

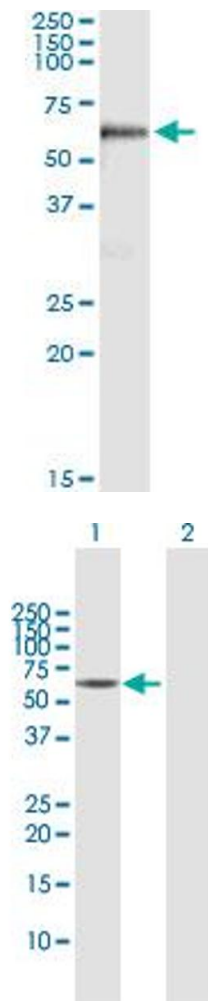
Target:	CCT6B
Alternative Name:	CCT6B (CCT6B Products)
Background:	Full Gene Name: chaperonin containing TCP1, subunit 6B (zeta 2) Synonyms: CCT-zeta-2,CCTZ-2,Cctz2,TCP-1-zeta-2,TSA303
Gene ID:	10693

Application Details

Application Notes:	Optimal working dilution should be determined by the investigator.
Restrictions:	For Research Use only

Handling

Format:	Liquid
Buffer:	No additive
Preservative:	Without preservative
Handling Advice:	Aliquot to avoid repeated freezing and thawing.
Storage:	-20 °C
Storage Comment:	Store at -20°C or lower. Aliquot to avoid repeated freezing and thawing.



Immunoprecipitation

Image 1. Immunoprecipitation of CCT6B transfected lysate using anti-CCT6B MaxPab rabbit polyclonal antibody and Protein A Magnetic Bead , and immunoblotted with CCT6B purified MaxPab mouse polyclonal antibody (B01P) .

Western Blotting

Image 2. Western Blot analysis of CCT6B expression in transfected 293T cell line by CCT6B MaxPab polyclonal antibody.

Lane 1: CCT6B transfected lysate(57.80 KDa).

Lane 2: Non-transfected lysate.