

Datasheet for ABIN948990  
**anti-SEC24A antibody (AA 301-390)**



[Go to Product page](#)

2 Images

## Overview

Quantity:	100 µg
Target:	SEC24A
Binding Specificity:	AA 301-390
Reactivity:	Human
Host:	Mouse
Clonality:	Monoclonal
Conjugate:	This SEC24A antibody is un-conjugated
Application:	Western Blotting (WB), ELISA

## Product Details

Purpose:	Mouse monoclonal antibody raised against a partial recombinant SEC24A.
Immunogen:	SEC24A (XP_094581.5, 301 a.a. ~ 390 a.a) partial recombinant protein with GST tag. MW of the GST tag alone is 26 KDa.
Sequence:	PLTSSYRDVP QPLFNSAVNQ EGITSNTNNG SMVVHSSYDE IEGGGLLATP QLTKNPKMS RSVGYSYPSL PPGYQNTTTP GATGVPPSSL
Clone:	4D9
Isotype:	IgG2a
Cross-Reactivity:	Human
Characteristics:	Antibody Reactive Against Recombinant Protein.

## Target Details

Target:	SEC24A
Alternative Name:	SEC24A ( <a href="#">SEC24A Products</a> )
Background:	Full Gene Name: SEC24 family, member A ( <i>S. cerevisiae</i> ) Synonyms:
Gene ID:	10802
NCBI Accession:	<a href="#">XM_094581</a>

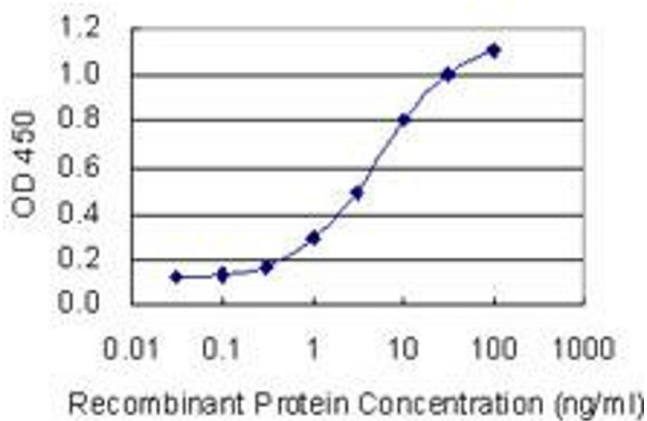
## Application Details

Application Notes:	Optimal working dilution should be determined by the investigator.
Restrictions:	For Research Use only

## Handling

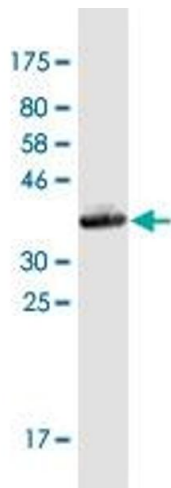
Buffer:	In 1x PBS, pH 7.4
Handling Advice:	Aliquot to avoid repeated freezing and thawing.
Storage:	-20 °C
Storage Comment:	Store at -20°C or lower. Aliquot to avoid repeated freezing and thawing.

## Images



### ELISA

**Image 1.** Detection limit for recombinant GST tagged SEC24A is 0.1 ng/ml as a capture antibody.



### Western Blotting

**Image 2.** Western Blot detection against Immunogen (35.64 kDa).