

Datasheet for ABIN949022  
**anti-SF3B2 antibody (AA 1-636)**



[Go to Product page](#)

3 Images

Overview

Quantity:	50 µg
Target:	SF3B2
Binding Specificity:	AA 1-636
Reactivity:	Human
Host:	Mouse
Clonality:	Polyclonal
Conjugate:	This SF3B2 antibody is un-conjugated
Application:	Western Blotting (WB), Immunofluorescence (IF)

Product Details

Purpose:	Mouse polyclonal antibody raised against a full-length human SF3B2 protein.
Immunogen:	SF3B2 (AAH07610.1, 1 a.a. ~ 636 a.a) full-length human protein.
Sequence:	MDDPSVGPKI PQALEKILQL KESRQEEMNS QQEEEEEMETD ARSSLGQSAS ETEEDTVSVS KKEKNRKRRN RKKKKKPQRV RGVSSSESSGD REKDSTRSRG SDSPAADVEI EYVTEEPEIY EPNFIFFKRI FEAFLKTDVV KKEKEKEPEK LDKLENSAAP KKKGFEEEHK DSDDDSSDDE QEKKPEAPKL SKKKLRRMNR FTVAELKQLV ARPDVVMHD VTAQDPKLLV HLKATRNSVP VPRHWCFKRK YLQGKRGIEK PPFELPDFIK RTGIQEMREA LQEKEEQKTM KSKMREKVRP KMGKIDIDYQ KLHDAFFKWQ TKPKLTIHGD LYYEGKEFET RLKEKKPGDL SDELRLSLGM PVGPNNAHKVP PPWLIAMQRY GPPPSYPNLK IPGLNSPIPE SCSFGYHAGG WGKPPVDETG KPLYGDVFGT NAAEFQTKTE EEEIDRTPWG ELEPSDEESS EEEEEESDE DKPDETGFIT PADSGLITPG GFSSVPAGME TPELIELRKK KIEEAMDGSE TPQLFTVLPE KRTATVGGAM MGSTHIYDMS TVMSRKGPAP ELQGVEVALA PEELEDPMA MTQKYEEHVR EQQAQVEKED

## Product Details

---

FSDMVAEHAA KQKQKKRKAQ PQDSRGGSKK YKEFKF

Cross-Reactivity: Human

Characteristics: Antibody reactive against mammalian transfected lysate.

## Target Details

---

Target: SF3B2

Alternative Name: SF3B2 ([SF3B2 Products](#))

Background: Full Gene Name: splicing factor 3b, subunit 2, 145 kDa  
Synonyms: SAP145,SF3B145,SF3b1,SF3b150

Gene ID: 10992

## Application Details

---

Application Notes: Optimal working dilution should be determined by the investigator.

Restrictions: For Research Use only

## Handling

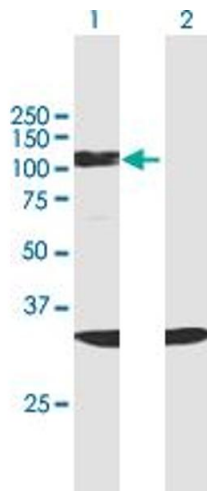
---

Buffer: In 1x PBS, pH 7.4

Handling Advice: Aliquot to avoid repeated freezing and thawing.

Storage: -20 °C

Storage Comment: Store at -20°C or lower. Aliquot to avoid repeated freezing and thawing.

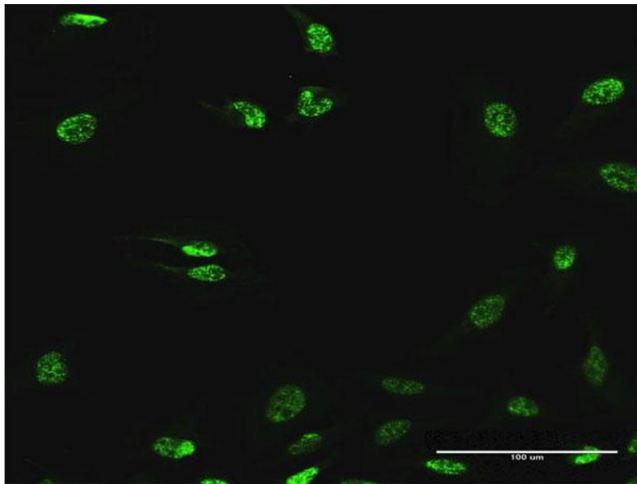


### Western Blotting

**Image 1.** Western Blot analysis of SF3B2 expression in transfected 293T cell line by SF3B2 MaxPab polyclonal antibody.

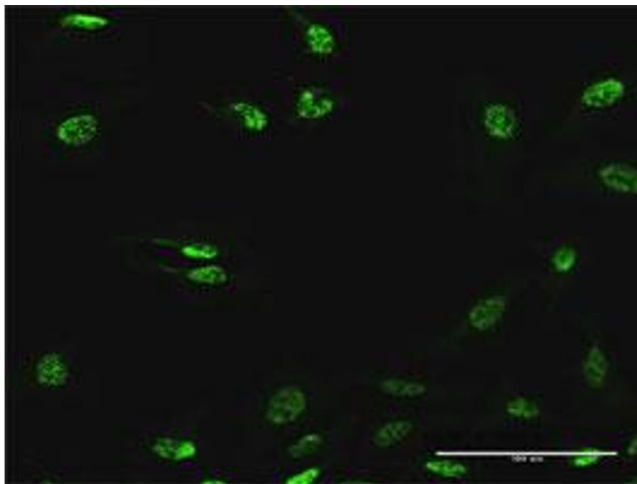
Lane 1: SF3B2 transfected lysate(72.6 KDa).

Lane 2: Non-transfected lysate.



### Immunofluorescence

**Image 2.** Immunofluorescence of purified MaxPab antibody to SF3B2 on HeLa cell. [antibody concentration 10 μg/ml]



### Immunofluorescence

**Image 3.** Immunofluorescence of purified MaxPab antibody to SF3B2 on HeLa cell. (antibody concentration 10 μg/mL)