

Datasheet for ABIN949026  
**anti-RBPMS antibody (AA 1-196)**[Go to Product page](#)

## 1 Image

## Overview

Quantity:	50 µg
Target:	RBPMS
Binding Specificity:	AA 1-196
Reactivity:	Human
Host:	Mouse
Clonality:	Polyclonal
Conjugate:	This RBPMS antibody is un-conjugated
Application:	Western Blotting (WB)

## Product Details

Purpose:	Mouse polyclonal antibody raised against a full-length human RBPMS protein.
Immunogen:	RBPMS (NP_001008710.1, 1 a.a. ~ 196 a.a) full-length human protein.
Sequence:	MNNGGKAEKE NTPSEANLQE EEVRTLFVSG LPLDIKPREL YLLFRPFKG Y EGSLIKLTSK QPVGFVSFDS RSEAEAAKNA LNGIRFDPEI PQTLRLEFAK ANTKMAKNKL VGTPNPSTPL PNTVPQFIAR EPYELTVPAL YPSSPEVWAP YPLYPAELAP ALPPPAFTYP ASLHAQMRWL PPSEATSQGW KSRQFC
Cross-Reactivity:	Human
Characteristics:	Antibody reactive against mammalian transfected lysate.

## Target Details

Target:	RBPMS
---------	-------

Target Details

Alternative Name:	RBPMS ( <a href="#">RBPMS Products</a> )
Background:	Full Gene Name: RNA binding protein with multiple splicing Synonyms: HERMES
Gene ID:	11030
NCBI Accession:	<a href="#">NM_001008710</a>

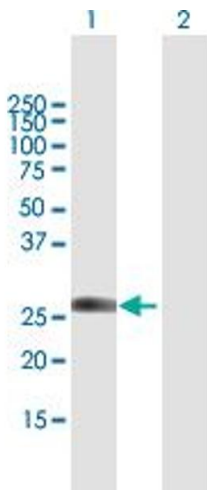
Application Details

Application Notes:	Optimal working dilution should be determined by the investigator.
Restrictions:	For Research Use only

Handling

Buffer:	In 1x PBS, pH 7.4
Handling Advice:	Aliquot to avoid repeated freezing and thawing.
Storage:	-20 °C
Storage Comment:	Store at -20°C or lower. Aliquot to avoid repeated freezing and thawing.

Images



**Western Blotting**

**Image 1.** Western Blot analysis of RBPMS expression in transfected 293T cell line by RBPMS MaxPab polyclonal antibody.

Lane 1: RBPMS transfected lysate(21.56 KDa).

Lane 2: Non-transfected lysate.