



[Go to Product page](#)

Datasheet for ABIN949035

anti-RAPGEF4 antibody (AA 1-1011)

1 Image

Overview

Quantity:	50 µg
Target:	RAPGEF4
Binding Specificity:	AA 1-1011
Reactivity:	Human
Host:	Mouse
Clonality:	Polyclonal
Conjugate:	This RAPGEF4 antibody is un-conjugated
Application:	Western Blotting (WB)

Product Details

Purpose:	Mouse polyclonal antibody raised against a full-length human RAPGEF4 protein.
Immunogen:	RAPGEF4 (AAH24004.1, 1 a.a. ~ 1011 a.a) full-length human protein.
Sequence:	MVAHAHAHSS SSAEWIACLD KRPLERSSED VDIIFTRLKE VKAFEKFHPN LLHQICLCGY YENLEKGITL FRQDIGTNW YAVLAGSLDV KVSETSSHQD AVTICTLGIG TAFGESILDN TPRHATIVTR ESSELLRIEQ KDFKALWEKY RQYMAGLLAP PYGVMETGSN NDRIPDKENT PLIEPHVPLR PANTITKVPS EKILRAGKIL RNAILSGRAPH MIRDRKYHLK TYRQCCVGTE LVDWMMQQTP CVHSRTQAVG MWQVLLEDGV LNHVDQEHHF QDKYLFYRFL DDEHEDAPLP TEEEKKECDE ELQDTMLLLS QMGPDAMMRM ILRKPPGQRT VDDLEIIYEE LLHIKALSHL STTVKRELAVLIFESHAKG GTVLFNQGEE GTSWYIILKG SVNVIYGGK VVCTLHEGDD FGKLALVNDAPRAASIVLRE DNCHFLRVDK EDFNRILRDV EANTVRLKEH DQDVLVLEKV PAGNRASNQG NSQPQKYTV MSGTPEKILE HFLETIRLEA TLNEATDSVL NDFIMMHCVF MPNTQLCPAL VAHYHAQPSQ GTEQEKMDYA LNNKRRVIRL VLQWAAMYGD LLQEDDVSM

Product Details

FLEEFYVSVS DDARMIAALK EQLPELEKIV KQISEDAPAP QKKHKVLLQQ FNTGDERAQK
RQPIRGSDEV LFKVYCMDPT YTTIRVPVAT SVKEVISAVA DKLGSGEGLI IVKMSSGGEK
VVLKPNVSV FMTLTINGRL FACPREQFDS LTPLPEQEGP TVGTVGTFEL MSSKDLAYQM
TIYDWELFNC VHELELIYHT FGRHNFKKT ANLDLFLRRF NEIQFWVTE ICLCSQLSKR
VQLLKKFIKI AAHCKEYKNL NSFFAIVMGL SNVAVSRLAL TWEKLPKFK KYAEFESLM
DPSRNHRAYR LTVAKLEPPL IPFMPLLIKD MFTTHEGNKT FIDNLVNF EK MRMIANTART
VRYYSQPFN PDAAQANKNH QDVRSYVRQL NVIDNQRTLS QMSHRLEPRR P

Cross-Reactivity: Human

Characteristics: Antibody reactive against mammalian transfected lysate.

Target Details

Target: RAPGEF4

Alternative Name: RAPGEF4 ([RAPGEF4 Products](#))

Background: Full Gene Name: Rap guanine nucleotide exchange factor (GEF) 4
Synonyms: CAMP-GEFII, CGEF2, EPAC2, Nbla00496

Gene ID: 11069

Pathways: [Hormone Transport, Smooth Muscle Cell Migration](#)

Application Details

Application Notes: Optimal working dilution should be determined by the investigator.

Restrictions: For Research Use only

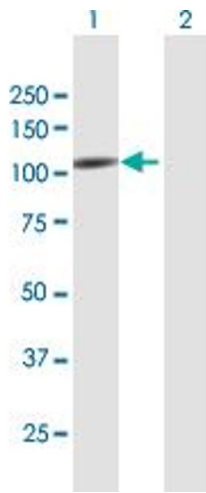
Handling

Buffer: In 1x PBS, pH 7.4

Handling Advice: Aliquot to avoid repeated freezing and thawing.

Storage: -20 °C

Storage Comment: Store at -20°C or lower. Aliquot to avoid repeated freezing and thawing.



Western Blotting

Image 1. Western Blot analysis of RAPGEF4 expression in transfected 293T cell line by RAPGEF4 MaxPab polyclonal antibody.

Lane 1: RAPGEF4 transfected lysate(111.21 kDa).

Lane 2: Non-transfected lysate.