



Datasheet for ABIN949040  
**anti-GLMN antibody (AA 1-594)**



[Go to Product page](#)

2 Images

Overview

Quantity:	100 µL
Target:	GLMN
Binding Specificity:	AA 1-594
Reactivity:	Human
Host:	Rabbit
Clonality:	Polyclonal
Conjugate:	This GLMN antibody is un-conjugated
Application:	Western Blotting (WB), Immunoprecipitation (IP)

Product Details

Purpose:	Rabbit polyclonal antibody raised against a full-length human GLMN protein.
Immunogen:	GLMN (NP_444504.1, 1 a.a. ~ 594 a.a) full-length human protein.
Sequence:	MAVEELQSII KRCQILEEQD FKEEDFGLFQ LAGQRCIEEG HTDQLLEIIQ NEKNKVIKIN MGWNLVGPVV RCLLCKDKED SKRKVYFLIF DLLVKLCNPK ELLGLLELI EEPGKQISQ SILLLLQPLQ TVIQKLHNKA YSIGLALSTL WNQLSLLPVP YSKEQIQMDD YGLCQCCKAL IEFTKPFVEE VIDNKENSLE NEKLKDELLK FCFKSLKCPL LTAQFFEQSE EGGNDPFRYF ASEIIGFLSA IGHPFKMIF NHGRKKRTWN YLEFEEEEENK QLADSMASLA YLVFVQGIHI DQLPMVLSPL YLLQFNMGHI EVFLQRTEES VISKGLELLE NSLLRIEDNS LLYQYLEIKS FLTVPQGLVK VMTLCPIETL RKKSLAMLQL YINKLDSQGK YTLFRCLLNT SNHSGVEAFI IQNIKNQIDM SLKRTRNNKW FTGPQLISLL DLVFLPEGA ETDLLQNSDR IMASLNLLRY LVIKDNENDN QTGLWTELGN IENNFLKPLH IGLNMSKAHY EAEIKNSQEA QKSKDLCSIT VSGEEIPNMP PEMQLKVLHS ALFTFDLIES VLARVEELIE IKTKSTSEEN IGIK

## Product Details

---

Cross-Reactivity:	Human
Characteristics:	Antibody reactive against mammalian transfected lysate.

## Target Details

---

Target:	GLMN
Alternative Name:	GLMN ( <a href="#">GLMN Products</a> )
Background:	Full Gene Name: glomulin, FKBP associated protein Synonyms: FAP,FAP48,FAP68,FKBPAP,GLML,GVM,VMGLOM
Gene ID:	11146
NCBI Accession:	<a href="#">NM_053274</a>
Pathways:	<a href="#">Tube Formation</a>

## Application Details

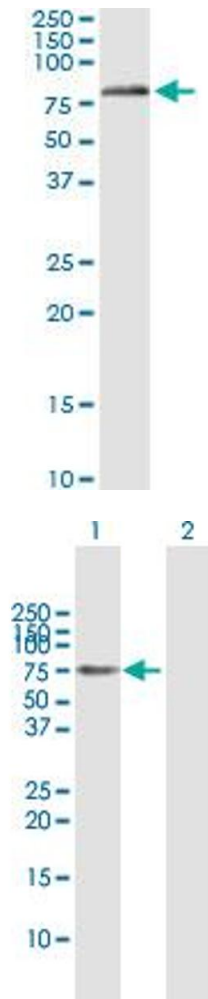
---

Application Notes:	Optimal working dilution should be determined by the investigator.
Restrictions:	For Research Use only

## Handling

---

Format:	Liquid
Buffer:	No additive
Preservative:	Without preservative
Handling Advice:	Aliquot to avoid repeated freezing and thawing.
Storage:	-20 °C
Storage Comment:	Store at -20°C or lower. Aliquot to avoid repeated freezing and thawing.



### Immunoprecipitation

**Image 1.** Immunoprecipitation of GLMN transfected lysate using anti-GLMN MaxPab rabbit polyclonal antibody and Protein A Magnetic Bead , and immunoblotted with GLMN purified MaxPab mouse polyclonal antibody (B01P) .

### Western Blotting

**Image 2.** Western Blot analysis of GLMN expression in transfected 293T cell line by GLMN MaxPab polyclonal antibody.

Lane 1: GLMN transfected lysate(68.20 KDa).

Lane 2: Non-transfected lysate.