



[Go to Product page](#)

Datasheet for ABIN949050  
**anti-PACSIN2 antibody (AA 1-486)**

1 Image

Overview

Quantity:	100 µg
Target:	PACSIN2
Binding Specificity:	AA 1-486
Reactivity:	Human
Host:	Rabbit
Clonality:	Polyclonal
Conjugate:	This PACSIN2 antibody is un-conjugated
Application:	Western Blotting (WB)

Product Details

Purpose:	Rabbit polyclonal antibody raised against a full-length human PACSIN2 protein.
Immunogen:	PACSIN2 (AAH08037.1, 1 a.a. ~ 486 a.a) full-length human protein.
Sequence:	MSVTYDDSVG VEVSSDSFWE VGNYKRTVKR IDDGHRLCSD LMNCLHERAR IEKAYAQQLT EWARRWRQLV EKGPQYGTVE KAWMAFMSEA ERVSELHLEV KASLMNDDFE KIKNWQKEAF HKQMMGGFKE TKEAEDGFRK AQKPWAKKLLK EVEAAKKAHH AACKEEKLA I SREANSKADP SLNPEQLKKL QDKIEKCKQD VLKTKEKYEK SLKELDQGTP QYMENMEQVF EQCQQFEEKR LRFFREVLL E VQKHLDSLNV AGYKAIYHDL EQSIRAADAV EDLRWFRANH GPGMAMNWPQ FEEWSADLNR TLRREKKKA TDGVTLTGIN QTGDQSLPSK PSSTLNVPSN PAQSAQSQSS YNPFEDDDT GSTVSEKDDT KAKNVSSYEK TQSYPTDWS DESNNPFSST DANGDSNPF D DDATSGTEVR VRALYDYEGQ EHDLSFKAG DELTKMEDED EQGWCKGRLD NGQVGLYPAN YVEAIQ

## Product Details

Cross-Reactivity:	Human
Characteristics:	Antibody reactive against mammalian transfected lysate.

## Target Details

Target:	PACSIN2
Alternative Name:	PACSIN2 ( <a href="#">PACSIN2 Products</a> )
Background:	Full Gene Name: protein kinase C and casein kinase substrate in neurons 2 Synonyms: SDPII
Gene ID:	11252

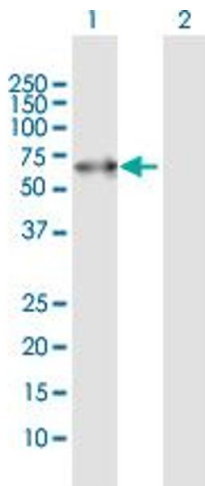
## Application Details

Application Notes:	Optimal working dilution should be determined by the investigator.
Restrictions:	For Research Use only

## Handling

Buffer:	In 1x PBS, pH 7.4
Handling Advice:	Aliquot to avoid repeated freezing and thawing.
Storage:	-20 °C
Storage Comment:	Store at -20°C or lower. Aliquot to avoid repeated freezing and thawing.

## Images



### Western Blotting

**Image 1.** Western Blot analysis of PACSIN2 expression in transfected 293T cell line by PACSIN2 MaxPab polyclonal antibody.

Lane 1: PACSIN2 transfected lysate(55.70 KDa).

Lane 2: Non-transfected lysate.