

Datasheet for ABIN949088
anti-GPD1L antibody (AA 1-351)[Go to Product page](#)

2 Images

Overview

Quantity:	100 µL
Target:	GPD1L
Binding Specificity:	AA 1-351
Reactivity:	Human
Host:	Rabbit
Clonality:	Polyclonal
Conjugate:	This GPD1L antibody is un-conjugated
Application:	Western Blotting (WB), Immunoprecipitation (IP)

Product Details

Purpose:	Rabbit polyclonal antibody raised against a full-length human GPD1L protein.
Immunogen:	GPD1L (NP_055956.1, 1 a.a. ~ 351 a.a) full-length human protein.
Sequence:	MAAAPLKVCI VGSGNWGS AV AKIIGNNVKK LQKFASTVKM WVFEE TVNGR KLTDIINNDH ENVKYLPGHK LPENWAMSN LSEAVQDADL LVFVIPHQFI HRICDEITGR VPKKALGITL IKGIDEGPEG LKLISDIIRE KMGIDISVLM GANIANEVAA EKFCETTIGS KVMENGLLFFK ELLQTPNFRI TVVDDADTVE LCGALKNIVA VGAGFCDGLR CGDNTKAAVI RLGLMEMIAF ARIFCKGQVS TATFLESCGV ADLITTCYGG RNRVAAEFAF RTGKTIEELE KEMLNGQKLQ GPQTSAEVYR ILKQKGLLDK FPLFTAVYQI CYESRPVQEM LSCLQSHPEH T
Cross-Reactivity:	Human
Characteristics:	Antibody reactive against mammalian transfected lysate.

Target Details

Target:	GPD1L
Alternative Name:	GPD1L (GPD1L Products)
Background:	Full Gene Name: glycerol-3-phosphate dehydrogenase 1-like Synonyms: KIAA0089
Gene ID:	23171
NCBI Accession:	NM_015141

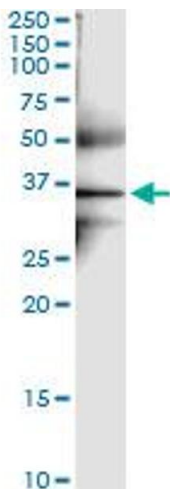
Application Details

Application Notes:	Optimal working dilution should be determined by the investigator.
Restrictions:	For Research Use only

Handling

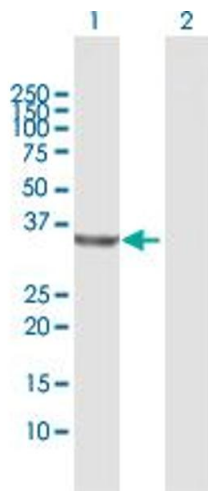
Format:	Liquid
Buffer:	No additive
Preservative:	Without preservative
Handling Advice:	Aliquot to avoid repeated freezing and thawing.
Storage:	-20 °C
Storage Comment:	Store at -20°C or lower. Aliquot to avoid repeated freezing and thawing.

Images



Immunoprecipitation

Image 1. Immunoprecipitation of GPD1L transfected lysate using anti-GPD1L MaxPab rabbit polyclonal antibody and Protein A Magnetic Bead , and immunoblotted with GPD1L purified MaxPab mouse polyclonal antibody (B01P) .



Western Blotting

Image 2. Western Blot analysis of GPD1L expression in transfected 293T cell line by GPD1L MaxPab polyclonal antibody.

Lane 1: GPD1L transfected lysate(38.40 KDa).

Lane 2: Non-transfected lysate.