



Datasheet for ABIN949094  
**anti-TBC1D1 antibody (AA 1-1168)**



[Go to Product page](#)

2 Images

Overview

Quantity:	100 µL
Target:	TBC1D1
Binding Specificity:	AA 1-1168
Reactivity:	Human
Host:	Rabbit
Clonality:	Polyclonal
Conjugate:	This TBC1D1 antibody is un-conjugated
Application:	Western Blotting (WB), Immunoprecipitation (IP)

Product Details

Purpose:	Rabbit polyclonal antibody raised against a full-length human TBC1D1 protein.
Immunogen:	TBC1D1 (AAH50321.3, 1 a.a. ~ 1168 a.a) full-length human protein.
Sequence:	MEPITFTARK HLLSNEVSVD FGLQLVGS LP VHSLTTMPML PWVVAEVRRL SRQSTRKEPV TKQVRLCVSP SGLRCEPEPG RSQQWDPLIY SSIFECKPQR VHKLHNSHD PSYFACLIKE DAVHRQSICY VFKADDQTKV PEIISIRQA GKIARQEELH CPSEFDDTFS KKFEVLFCGR VTVAHKKAPP ALIDECIEKF NHVSGSRGSE SPRPNPPHAA PTGSQEPVRR PMRKSFSQPG LRSLAFRKEL QDGLRSSGF FSSFEEEDIE NHLISGHNIV QPTDIEENRT MLFTIGQSEV YLISPDTKKI ALEKNFKEIS FCSQGIRHVD HFGFICRESS GGGGFHFVCY VFQCTNEALV DEIMMTLKQA FTVAAVQQT A KAPAQLCEGC PLQSLHKLCE RIEGMNSSKT KLELQKHLTT LTNQEATIF EEVQKLRPRN EQRENELIIS FLRCLYEEKQ KEHIHIGEMK QTSQMAAENI GSELPPSATR FRLDMLKNKA KRSLTESLES ILSRGNKARG LQEHISVDL DSSLSSTLSN TSKEPSVCEK EALPISESSF KLLGSSEDLS SDESSEHLPEE PAPTSPQQA F RRRANTLSHF

## Product Details

---

PIECQEPPQP ARGSPGVSQR KLMRYHSVST ETPHERKDFE SKANHLGDSG GTPVKTRRHS  
WRQQIFLRVA TPQKACDSSS RYEDYSELGE LPPRSLEPV CEDGPFGPPP EEKKRTSREL  
RELWQKAILK QILLRMEKE NQKLQASEND LLNKRLKLDY EITPCLKEV TTVWEKMLST  
PGRSKIKFDM EKMHSAVGQG VPRHHRGEIW KFLAEQFHLK HQFPSKQPK DVVPYKELLKQ  
LTSQQHAILI DLGRTFPTHP YFSAQLGAGQ LSLYNILKAY SLLDQEVGYC QGLSFVAGIL  
LLHMSEEEAF KMLKFLMFDM GLRKQYRPDM IILQIQMYQL SROLLHDYHRD LYNHLEEHEI  
GPSLYAAPWF LTMFASQFPL GFVARVFDMI FLQGTEVIFK VALSLLGSHK PLILQHENLE  
TIVDFIKSTL PNLGLVQMEK TINQVFEMDI AKQLQAYEVE YHVLQEELID SSPLSDNQRM  
DKLEKTNSSL RKQNLDLLEQ LQVANGRIQS LEATIEKLLS SESKCLKQAML TLELERSALL  
QTVEELRRRS AEPSDREPEC TQPEPTGD

Cross-Reactivity: Human

Characteristics: Antibody reactive against mammalian transfected lysate.

## Target Details

---

Target: TBC1D1

Alternative Name: TBC1D1 ([TBC1D1 Products](#))

Background: Full Gene Name: TBC1 (tre-2/USP6, BUB2, cdc16) domain family, member 1  
Synonyms: KIAA1108,TBC,TBC1

Gene ID: 23216

## Application Details

---

Application Notes: Optimal working dilution should be determined by the investigator.

Restrictions: For Research Use only

## Handling

---

Format: Liquid

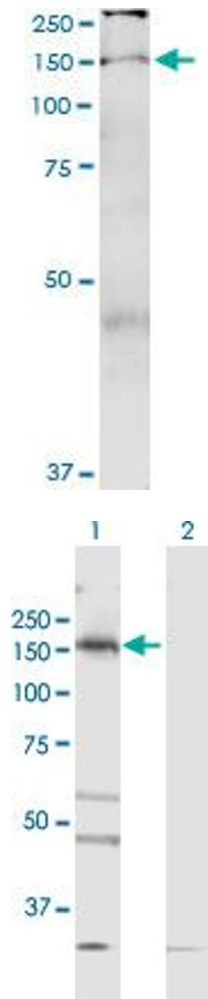
Buffer: No additive

Preservative: Without preservative

Handling Advice: Aliquot to avoid repeated freezing and thawing.

Storage: -20 °C

Storage Comment: Store at -20°C or lower. Aliquot to avoid repeated freezing and thawing.



### Immunoprecipitation

**Image 1.** Immunoprecipitation of TBC1D1 transfected lysate using anti-TBC1D1 MaxPab rabbit polyclonal antibody and Protein A Magnetic Bead , and immunoblotted with TBC1D1 purified MaxPab mouse polyclonal antibody (B01P)

### Western Blotting

**Image 2.** Western Blot analysis of TBC1D1 expression in transfected 293T cell line by TBC1D1 MaxPab polyclonal antibody.

Lane 1: TBC1D1 transfected lysate(128.48 KDa).

Lane 2: Non-transfected lysate.