



[Go to Product page](#)

Datasheet for ABIN949103  
**anti-ZCCHC11 antibody (AA 1-309)**

1 Image

Overview

Quantity:	100 µg
Target:	ZCCHC11
Binding Specificity:	AA 1-309
Reactivity:	Human
Host:	Rabbit
Clonality:	Polyclonal
Conjugate:	This ZCCHC11 antibody is un-conjugated
Application:	Western Blotting (WB)

Product Details

Purpose:	Rabbit polyclonal antibody raised against a full-length human ZCCHC11 protein.
Immunogen:	ZCCHC11 (AAH48301.1, 1 a.a. ~ 309 a.a) full-length human protein.
Sequence:	MEESKTLKSE NHEPKKNVIC EESKAVQVIG NQTLKARNDK SVKEIENSSP NRNSSKKNKQ NDICIEKTEV KSCKVNAANL PGPKDLGLVL RDQSHCKAKK FPNSPVKA EK ATISQAKSEK ATSLQAI AEK SPKSPNSVKA EKASSYQMKS EKVPSPPAEA EKGPSLLLLKD MRQKTELQQI GKKIPSSFTS VDKVNIEAVG GEKCALQNSP RSQKQQTCTD NTGDSDDDSAS GIEDVSDDL KMKNDESNKE NSSEMDYLEN ATVIDESALT PEQRLGLKQA EERLERDHIF RLEKVVYVVL VIWGEMCVS
Cross-Reactivity:	Human
Characteristics:	Antibody reactive against mammalian transfected lysate.

## Target Details

Target:	ZCCHC11
Alternative Name:	ZCCHC11 ( <a href="#">ZCCHC11 Products</a> )
Background:	Full Gene Name: zinc finger, CCHC domain containing 11 Synonyms: PAPD3
Gene ID:	23318
Pathways:	<a href="#">Stem Cell Maintenance</a>

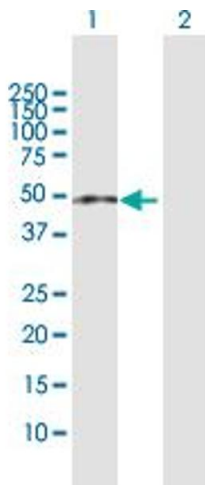
## Application Details

Application Notes:	Optimal working dilution should be determined by the investigator.
Restrictions:	For Research Use only

## Handling

Buffer:	In 1x PBS, pH 7.4
Handling Advice:	Aliquot to avoid repeated freezing and thawing.
Storage:	-20 °C
Storage Comment:	Store at -20°C or lower. Aliquot to avoid repeated freezing and thawing.

## Images



### Western Blotting

**Image 1.** Western Blot analysis of ZCCHC11 expression in transfected 293T cell line by ZCCHC11 MaxPab polyclonal antibody.

Lane 1: ZCCHC11 transfected lysate(34.10 kDa).

Lane 2: Non-transfected lysate.