



Datasheet for ABIN949116
anti-ISCU antibody (AA 1-142)



[Go to Product page](#)

1 Image

Overview

Quantity:	50 µg
Target:	ISCU
Binding Specificity:	AA 1-142
Reactivity:	Human
Host:	Mouse
Clonality:	Polyclonal
Conjugate:	This ISCU antibody is un-conjugated
Application:	Western Blotting (WB)

Product Details

Purpose:	Mouse polyclonal antibody raised against a full-length human NIFUN protein.
Immunogen:	NIFUN (NP_055116, 1 a.a. ~ 142 a.a) full-length human protein.
Sequence:	MVLIDMSVDL STQVVDHYEN PRNVGSLDKT SKNVGTGLVG APACGDVMKL QIQVDEKGGKI VDARFKTFGC GSAIASSSLA TEWVKGKTVE EALTIKNTDI AKELCLPPVK LHCSMLAEDA IKAALADYKL KQEPKKGEAE KK
Cross-Reactivity:	Human
Characteristics:	Antibody reactive against mammalian transfected lysate.

Target Details

Target:	ISCU
---------	------

Target Details

Alternative Name:	ISCU (ISCU Products)
Background:	Full Gene Name: iron-sulfur cluster scaffold homolog (E. coli) Synonyms: 2310020H20Rik,HML,ISU2,MGC74517,NIFU,NIFUN,hnifU
Gene ID:	23479
NCBI Accession:	NM_014301

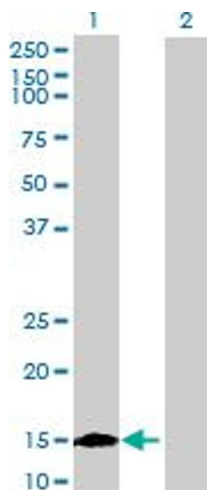
Application Details

Application Notes:	Optimal working dilution should be determined by the investigator.
Restrictions:	For Research Use only

Handling

Buffer:	In 1x PBS, pH 7.4
Handling Advice:	Aliquot to avoid repeated freezing and thawing.
Storage:	-20 °C
Storage Comment:	Store at -20°C or lower. Aliquot to avoid repeated freezing and thawing.

Images



Western Blotting

Image 1. Western Blot analysis of ISCU expression in transfected 293T cell line by ISCU MaxPab polyclonal antibody.

Lane 1: NIFUN transfected lysate(15.62 KDa).

Lane 2: Non-transfected lysate.