



[Go to Product page](#)

Datasheet for ABIN949123
anti-PRAME antibody (AA 1-509)

4 Images

Overview

Quantity:	100 µL
Target:	PRAME
Binding Specificity:	AA 1-509
Reactivity:	Human
Host:	Rabbit
Clonality:	Polyclonal
Conjugate:	This PRAME antibody is un-conjugated
Application:	Western Blotting (WB), Immunofluorescence (IF), Immunoprecipitation (IP)

Product Details

Purpose:	Rabbit polyclonal antibody raised against a full-length human PRAME protein.
Immunogen:	PRAME (NP_006106.1, 1 a.a. ~ 509 a.a) full-length human protein.
Sequence:	MERRRLWGSQ QSRYSISVW TSPRRLVELA GQSLKDEAL AIAALELLPR ELFPPLFMAA FDGRHSQTLK AMVQAWPFTC LPLGVLMKGQ HLHLETFKAV LDGLDVLLAQ EVRPRRWKLO VLDLRKNSHQ DFWTVWSGNR ASLYSFPEPE AAQPMTKKRK VDGLSTEAEQ PFIPVEVLVD LFLKEGACDE LFSYLIEKVK RKKNVLRLLCC KKLKIFAMPM QDIKMILKMV QLDSIEDLEV TCTWKLPTLA KFSPYLGQMI NLRRLLSHI HASSYISPEK EEQYIAQFTS QFLSLQCLQA LYVDSLFFLR GRDQLLRHV MNPLETSLIT NCRLSEGDVM HLSQSPSVSQ LSVLSLSGVM LTDVSPEPLQ ALLERASATL QDLVFDECGI TDDQLLALLP SLSHCSQLTT LSFYGNISIS SALQSLQHL IGLSNLTHVL YVPLESYED IHGTLHLERL AYLHARLREL LCELGRPSMV WLSANPCPHC GDRTFYDPEP ILCPCFMPN

Product Details

Cross-Reactivity:	Human
Characteristics:	Antibody reactive against mammalian transfected lysate.

Target Details

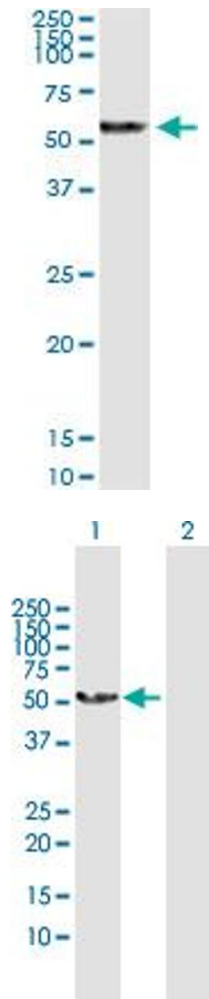
Target:	PRAME
Alternative Name:	PRAME (PRAME Products)
Background:	Full Gene Name: preferentially expressed antigen in melanoma Synonyms: MAPE,OIP4
Gene ID:	23532
NCBI Accession:	NM_006115
Pathways:	Retinoic Acid Receptor Signaling Pathway , Nuclear Hormone Receptor Binding

Application Details

Application Notes:	Optimal working dilution should be determined by the investigator.
Restrictions:	For Research Use only

Handling

Format:	Liquid
Buffer:	No additive
Preservative:	Without preservative
Handling Advice:	Aliquot to avoid repeated freezing and thawing.
Storage:	-20 °C
Storage Comment:	Store at -20°C or lower. Aliquot to avoid repeated freezing and thawing.



Immunoprecipitation

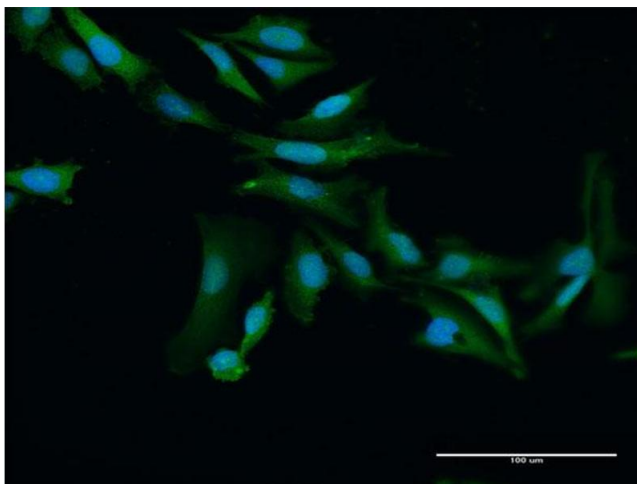
Image 1. Immunoprecipitation of PRAME transfected lysate using anti-PRAME MaxPab rabbit polyclonal antibody and Protein A Magnetic Bead , and immunoblotted with PRAME purified MaxPab mouse polyclonal antibody (B01P) .

Western Blotting

Image 2. Western Blot analysis of PRAME expression in transfected 293T cell line by PRAME MaxPab polyclonal antibody.

Lane 1: PRAME transfected lysate(57.90 KDa).

Lane 2: Non-transfected lysate.



Immunofluorescence

Image 3. Immunofluorescence of purified MaxPab antibody to PRAME on HeLa cell. [antibody concentration 20 ug/ml]

Please check the [product details page](#) for more images. Overall 4 images are available for ABIN949123.