



[Go to Product page](#)

Datasheet for ABIN949128

## anti-DDAH2 antibody (AA 1-285)

### 1 Image

#### Overview

Quantity:	50 µg
Target:	DDAH2
Binding Specificity:	AA 1-285
Reactivity:	Human
Host:	Mouse
Clonality:	Polyclonal
Conjugate:	This DDAH2 antibody is un-conjugated
Application:	Western Blotting (WB)

#### Product Details

Purpose:	Mouse polyclonal antibody raised against a full-length human DDAH2 protein.
Immunogen:	DDAH2 (AAH01435.1, 1 a.a. ~ 285 a.a) full-length human protein.
Sequence:	MGTPGEG LGR CSHALIRGVP ESLASGEGAG AGLPALDLAK AQREHGVLGG KLRQRLGLRL LELPPEESLP LGPLLGD TAV IQGDTALITR PWSPARRPEV DGVRKALQDL GLRIVEIGDE NATLDGTDVL FTGREFFVGL SKWTNHRGAE IVADTFRDFA VSTVPVSGPS HLRGLCGMGG PRTVVAGSSD AAQKAVRAMA VLTDHPYASL TLPDDAAADC LFLRPGLPGV PPFLHHRGGG DLPNSQEALQ KLSDVTLVPV SCSELEKAGA GLSSLCLVLS TRPHS
Cross-Reactivity:	Human
Characteristics:	Antibody reactive against mammalian transfected lysate.

## Target Details

Target:	DDAH2
Alternative Name:	DDAH2 ( <a href="#">DDAH2 Products</a> )
Background:	Full Gene Name: dimethylarginine dimethylaminohydrolase 2 Synonyms: DDAH,DDAHII,G6a,NG30
Gene ID:	23564

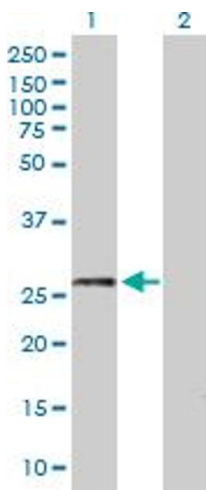
## Application Details

Application Notes:	Optimal working dilution should be determined by the investigator.
Restrictions:	For Research Use only

## Handling

Buffer:	In 1x PBS, pH 7.4
Handling Advice:	Aliquot to avoid repeated freezing and thawing.
Storage:	-20 °C
Storage Comment:	Store at -20°C or lower. Aliquot to avoid repeated freezing and thawing.

## Images



### Western Blotting

**Image 1.** Western Blot analysis of DDAH2 expression in transfected 293T cell line by DDAH2 MaxPab polyclonal antibody.

Lane 1: DDAH2 transfected lysate(31.46 KDa).

Lane 2: Non-transfected lysate.