



Datasheet for ABIN949139

anti-ARFIP2 antibody (AA 1-341)[Go to Product page](#)**3** Images

Overview

Quantity:	50 µg
Target:	ARFIP2
Binding Specificity:	AA 1-341
Reactivity:	Human
Host:	Mouse
Clonality:	Polyclonal
Conjugate:	This ARFIP2 antibody is un-conjugated
Application:	Western Blotting (WB), Immunofluorescence (IF)

Product Details

Purpose:	Mouse polyclonal antibody raised against a full-length human ARFIP2 protein.
Immunogen:	ARFIP2 (NP_036534.1, 1 a.a. ~ 341 a.a) full-length human protein.
Sequence:	MTDGILGKAA TMEIPIHGNG EARQLPEDDG LEQDLQQVMV SGPNLNETSI VSGGYGGSGD GLIPTGSGRH PSHSTTPSGP GDEVARGIAG EKFDIVKKWG INTYKCTKQL LSERFGRGSR TVDLELELQI ELLRETKRKY ESVLQLGRAL TAHLYSLLQT QHALGDAFAD LSQKSPQLQE EFGYNAETQK LLCKNGETLL GAVNFFVSSI NTLVTKTMED TLMTVKQYEA ARLEYDAYRT DLEELSLGPR DAGTRGRLES AQATFQHRD KYEKLKRGDVA IKLKFLEENK IKVMHKQLLL FHNAVSAYFA GNQKQLEQTL QQFNIKLRPP GAEKPSWLEE Q
Cross-Reactivity:	Human
Characteristics:	Antibody reactive against mammalian transfected lysate.

Target Details

Target:	ARFIP2
Alternative Name:	ARFIP2 (ARFIP2 Products)
Background:	Full Gene Name: ADP-ribosylation factor interacting protein 2 Synonyms: POR1
Gene ID:	23647
NCBI Accession:	NM_012402

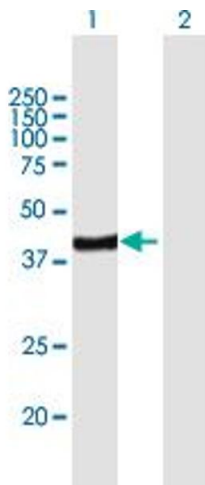
Application Details

Application Notes:	Optimal working dilution should be determined by the investigator.
Restrictions:	For Research Use only

Handling

Buffer:	In 1x PBS, pH 7.4
Handling Advice:	Aliquot to avoid repeated freezing and thawing.
Storage:	-20 °C
Storage Comment:	Store at -20°C or lower. Aliquot to avoid repeated freezing and thawing.

Images

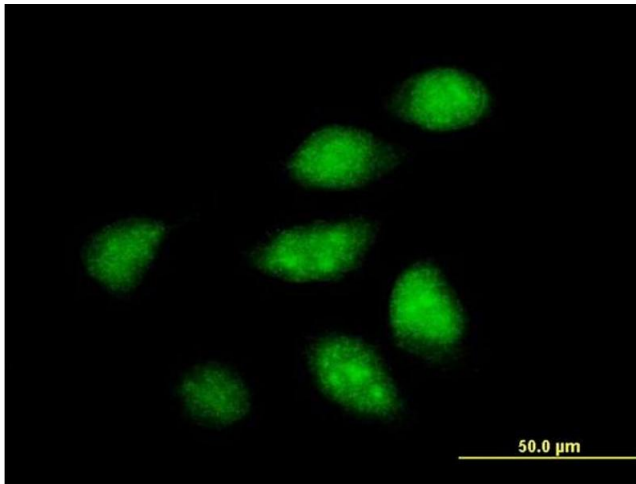


Western Blotting

Image 1. Western Blot analysis of ARFIP2 expression in transfected 293T cell line by ARFIP2 MaxPab polyclonal antibody.

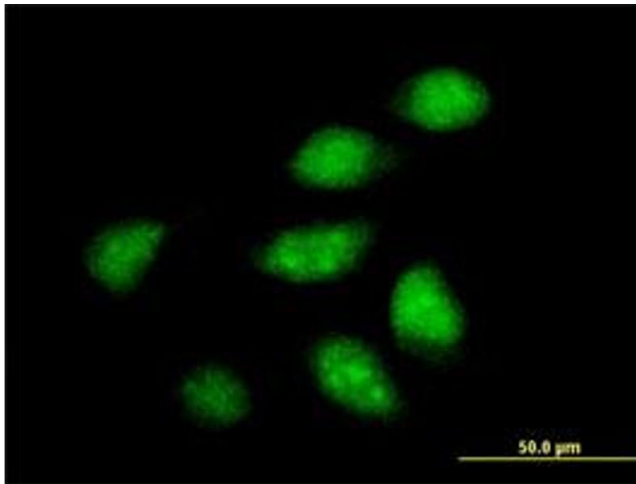
Lane 1: ARFIP2 transfected lysate(37.51 KDa).

Lane 2: Non-transfected lysate.



Immunofluorescence

Image 2. Immunofluorescence of purified MaxPab antibody to ARFIP2 on HeLa cell. [antibody concentration 10 ug/ml]



Immunofluorescence

Image 3. Immunofluorescence of purified MaxPab antibody to ARFIP2 on HeLa cell. (antibody concentration 10 μg/mL)