



[Go to Product page](#)

Datasheet for ABIN949149

## anti-PRP6/ANT-1 antibody (AA 1-941)

### 1 Image

#### Overview

Quantity:	50 µg
Target:	PRP6/ANT-1 (PRPF6)
Binding Specificity:	AA 1-941
Reactivity:	Human
Host:	Mouse
Clonality:	Polyclonal
Conjugate:	This PRP6/ANT-1 antibody is un-conjugated
Application:	Western Blotting (WB)

#### Product Details

Purpose:	Mouse polyclonal antibody raised against a full-length human C20orf14 protein.
Immunogen:	C20orf14 (NP_036601, 1 a.a. ~ 941 a.a) full-length human protein.
Sequence:	MNKKKKPFLG MPAPLGYVPG LGRGATGFTT RSDIGPARDA NDPVDDRHPG PGKRTVGDQM KKNQAADDDD EDLNDTNYDE FNGYAGSLFS SGPYEKDDDEE ADAIYAALDK RMDERRKERR EQREKEEIEK YRMERPKIQQ QFSDLKRKLA EVTEEEWLSI PEVGDARNKR QRNPRYEKLT PVPDSFFAKH LQTGENHTSV DPRQTQFGGL NTPYPGGLNT PYPGGMTPGL MTPGTGELDM RKIGQARNTL MDMRLSQVSD SVSGQTVVDP KGYLTDLNSM IPTHGGDIND IKKARLLLKS VRETNPHHPP AWIASARLEE VTGKLQVARN LIMKGTEMCP KSEDVWLEAA RLQPGDTAKA VVAQAVRHLP QSVRIYIRAA ELETDIRAKK RVLKALEHV PNSVRLWKAA VELEEPEDAR IMLSRAVECC PTSVELWLAL ARLETYENAR KVLNKARENI PTDRHIWITA AKLEEANGNT QMVEKIIDRA ITSLRANGVE INREQWIQDA EECDRAGSVA TCQAVMRAVI GIGIEEEDRK HTWMEDADSC VAHNALECAR AIYAYALQVF PSKKSVWLRA AYFEKNHGTR ESLEALLQRA

## Product Details

---

VAHCPKAEVL WLMGAKSKWL AGDVPAARSI LALAFQANPN SEEIWLAAVK LESENDEYER  
ARRLLAKARS SAPTARVFMK SVKLEWVQDN IRAAQDLCEE ALRHYEDFPK LWMMKGQIEE  
QKEMMEKARE AYNQGLKKCP HSTPLWLLLS RLEEKIGQLT RARAILEKSR LKNPKNPGLW  
LESVRLEYRA GLKNIANTLM AKALQECPNS GILWSEAIFL EARPQRRTKS VDALKKCEHD  
PHVLLAVAKL FWSQRKITKA REWFHRTVKI DSDLGDAWAF FYKFELQHGT EEQQEEVRKR  
CESAEPRHGE LWCAVSKDIA NWQKKIGDIL RLVAGRIKNT F

Cross-Reactivity: Human

Characteristics: Antibody reactive against mammalian transfected lysate.

## Target Details

---

Target: PRP6/ANT-1 (PRPF6)

Alternative Name: PRPF6 ([PRPF6 Products](#))

Background: Full Gene Name: PRP6 pre-mRNA processing factor 6 homolog (*S. cerevisiae*)  
Synonyms: ANT-1,C20orf14,TOM,U5-102K,hPrp6

Gene ID: 24148

NCBI Accession: [NM\\_012469](#)

Pathways: [Ribonucleoprotein Complex Subunit Organization](#), [Proton Transport](#), [Dicarboxylic Acid Transport](#)

## Application Details

---

Application Notes: Optimal working dilution should be determined by the investigator.

Restrictions: For Research Use only

## Handling

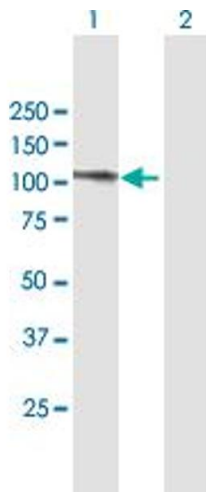
---

Buffer: In 1x PBS, pH 7.4

Handling Advice: Aliquot to avoid repeated freezing and thawing.

Storage: -20 °C

Storage Comment: Store at -20°C or lower. Aliquot to avoid repeated freezing and thawing.



### Western Blotting

**Image 1.** Western Blot analysis of PRPF6 expression in transfected 293T cell line by PRPF6 MaxPab polyclonal antibody.

Lane 1: C20orf14 transfected lysate(103.51 KDa).

Lane 2: Non-transfected lysate.