



[Go to Product page](#)

Datasheet for ABIN949156  
**anti-BRMS1 antibody (AA 1-246)**

1 Image

Overview

Quantity:	50 µg
Target:	BRMS1
Binding Specificity:	AA 1-246
Reactivity:	Human
Host:	Mouse
Clonality:	Polyclonal
Conjugate:	This BRMS1 antibody is un-conjugated
Application:	Western Blotting (WB)

Product Details

Purpose:	Mouse polyclonal antibody raised against a full-length human BRMS1 protein.
Immunogen:	BRMS1 (NP_056214.1, 1 a.a. ~ 246 a.a) full-length human protein.
Sequence:	MPVQPPSKDT EEMEAEGDSA AEMNGEEEEES EEERSGSQTE SEESSEMDD EDYERRRSEC VSEMLDLEKQ FSELKEKLFRL ERLSQLRLRL EEVGAERAPE YTEPLGGLQR SLKIRIQVAG IYKGFCLDVI RNKYECQLQG AKQHLESEKL LLYDTLQGEL QERIQRLEED RQSLDLSSEW WDDKLHARGS SRSWDSLPPS KRKKAPLVSG PYIVYMLQEI DILEDWTAIK KARAAVSPQK RKSDGP
Cross-Reactivity:	Human
Characteristics:	Antibody reactive against mammalian transfected lysate.

## Target Details

Target:	BRMS1
Alternative Name:	BRMS1 ( <a href="#">BRMS1 Products</a> )
Background:	Full Gene Name: breast cancer metastasis suppressor 1 Synonyms: DKFZp564A063
Gene ID:	25855
NCBI Accession:	<a href="#">NM_015399</a>

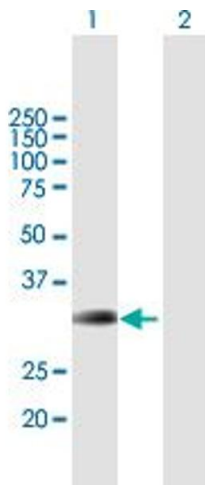
## Application Details

Application Notes:	Optimal working dilution should be determined by the investigator.
Restrictions:	For Research Use only

## Handling

Buffer:	In 1x PBS, pH 7.4
Handling Advice:	Aliquot to avoid repeated freezing and thawing.
Storage:	-20 °C
Storage Comment:	Store at -20°C or lower. Aliquot to avoid repeated freezing and thawing.

## Images



### Western Blotting

**Image 1.** Western Blot analysis of BRMS1 expression in transfected 293T cell line by BRMS1 MaxPab polyclonal antibody.

Lane 1: BRMS1 transfected lysate(27.06 kDa).

Lane 2: Non-transfected lysate.