

Datasheet for ABIN949165
anti-C2CD2 antibody (AA 1-388)



[Go to Product page](#)

2 Images

Overview

Quantity:	100 µg
Target:	C2CD2
Binding Specificity:	AA 1-388
Reactivity:	Human
Host:	Rabbit
Clonality:	Polyclonal
Conjugate:	This C2CD2 antibody is un-conjugated
Application:	Western Blotting (WB)

Product Details

Purpose:	Rabbit polyclonal antibody raised against a full-length human C2CD2 protein.
Immunogen:	C2CD2 (AAH62323.1, 1 a.a. ~ 388 a.a) full-length human protein.
Sequence:	MRLSPFHLQL EFHMKEKRED LQISWSFISV PEMA VNIQPK ALGEDQVAET SAMSDVLKDI LKHLAGSASP SVVLITKPTT VKEAQLQCA ASTAQESCPP KPPRAHELKL LVRNIHVLLL SEPGASGHIN AVCVVQLNDP VQRFSSSTLTK NTPDLMWEEE FTFELNAKSK ELHLQISEAG RSSEGLLATA TVPLDLFKKQ PSGPQSFTLT SGSACGSSVL GSVTAEFSYM EPGELKSWPI PPPVPAKIE KDRTVMPCGT VTTVTAVKT KPRVDVGRAS PLSSDSPVKT PIKVKVIEKD ISVQAIACRS APVSKTLSSS DTELLVLNGS DPVAEVAIRQ LSESSKCLKK SPRKKSTIII SGISKVPSWW LGRCSSGHLS VTCCSSAL
Cross-Reactivity:	Human
Characteristics:	Antibody reactive against mammalian transfected lysate.

Target Details

Target:	C2CD2
Alternative Name:	C2CD2 (C2CD2 Products)
Background:	Full Gene Name: C2 calcium-dependent domain containing 2 Synonyms: C21orf25,C21orf258,DKFZp586F0422,DKFZp686O198,MGC71445,TMEM24L
Gene ID:	25966

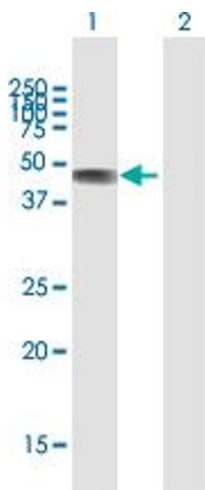
Application Details

Application Notes:	Optimal working dilution should be determined by the investigator.
Restrictions:	For Research Use only

Handling

Buffer:	In 1x PBS, pH 7.4
Handling Advice:	Aliquot to avoid repeated freezing and thawing.
Storage:	-20 °C
Storage Comment:	Store at -20°C or lower. Aliquot to avoid repeated freezing and thawing.

Images

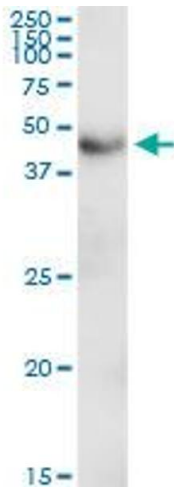


Western Blotting

Image 1. Western Blot analysis of C2CD2 expression in transfected 293T cell line by C2CD2 MaxPab polyclonal antibody.

Lane 1: C2CD2 transfected lysate(42.79 KDa).

Lane 2: Non-transfected lysate.



Western Blotting

Image 2. C2CD2 MaxPab rabbit polyclonal antibody.
Western Blot analysis of C2CD2 expression in human colon.