

Datasheet for ABIN949174  
**anti-LSM14A antibody (AA 1-463)**



[Go to Product page](#)

2 Images

Overview

Quantity:	50 µg
Target:	LSM14A
Binding Specificity:	AA 1-463
Reactivity:	Human
Host:	Mouse
Clonality:	Polyclonal
Conjugate:	This LSM14A antibody is un-conjugated
Application:	Western Blotting (WB)

Product Details

Purpose:	Mouse polyclonal antibody raised against a full-length human LSM14A protein.
Immunogen:	LSM14A (AAH16842.1, 1 a.a. ~ 463 a.a) full-length human protein.
Sequence:	MSGGTPYIGS KISLISKAEI RYEGILYTID TENSTVALAK VRSFGTEDRP TDRPIPPRDE VFEYIIFRGS DIKDLTVCEP PKPQCCLPQD PAIVQSSLGS STSSFQSMGS YGPFGRMPY SQFSPSSLVG QQFGAVGVAG SSLTSFGTET SNSGTLQSS AVGSAFTQDT RSLKTQLSQG RSSPQLDPLR KSPTMEQAVQ TASAHL PAPA AVGRRSPVST RPLPSASQKA GENQEHRRAE VHKVSRPENE QLRNDNKRQV APGAPSAPRR GRGGHRGGRG RFGIRRDGPM KFEKDFDFES ANAQFNKEEI DREFHNKLLK KEDKLEKQEK PVNGEDKGDS GVDTQNSEGN ADEEDPLGPN CYYDKTKSFF DNISCDDNRE RRPTWAEERR LNAETFGIPL RPNRGRGGYR GRGGLGFRGG RGRGGGRGGT FTAPRGFRGG FRGGRRGGREF ADFEYRKDNK VAA
Cross-Reactivity:	Human

## Product Details

Characteristics: Antibody reactive against mammalian transfected lysate.

## Target Details

Target: LSM14A

Alternative Name: LSM14A ([LSM14A Products](#))

Background: Full Gene Name: LSM14A, SCD6 homolog A (*S. cerevisiae*)  
Synonyms: C19orf13, DKFZp434D1335, FAM61A, RAP55

Gene ID: 26065

Pathways: [Activation of Innate immune Response](#), [Ribonucleoprotein Complex Subunit Organization](#)

## Application Details

Application Notes: Optimal working dilution should be determined by the investigator.

Restrictions: For Research Use only

## Handling

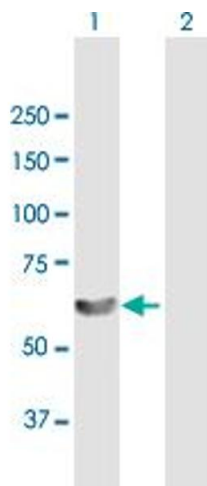
Buffer: In 1x PBS, pH 7.4

Handling Advice: Aliquot to avoid repeated freezing and thawing.

Storage: -20 °C

Storage Comment: Store at -20°C or lower. Aliquot to avoid repeated freezing and thawing.

## Images

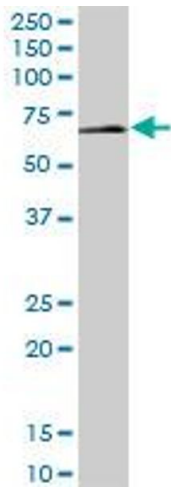


### Western Blotting

**Image 1.** Western Blot analysis of LSM14A expression in transfected 293T cell line by LSM14A MaxPab polyclonal antibody.

Lane 1: LSM14A transfected lysate(50.93 kDa).

Lane 2: Non-transfected lysate.



### Western Blotting

**Image 2.** LSM14A MaxPab polyclonal antibody. Western Blot analysis of LSM14A expression in human placenta.