



Datasheet for ABIN949187
anti-PPP1R14B antibody (AA 64-139)



[Go to Product page](#)

3 Images

Overview

Quantity:	100 µg
Target:	PPP1R14B
Binding Specificity:	AA 64-139
Reactivity:	Human
Host:	Mouse
Clonality:	Monoclonal
Conjugate:	This PPP1R14B antibody is un-conjugated
Application:	ELISA, Western Blotting (WB)

Product Details

Purpose:	Mouse monoclonal antibody raised against a partial recombinant PPP1R14B.
Immunogen:	PPP1R14B (NP_619634.1, 64 a.a. ~ 139 a.a) partial recombinant protein with GST tag. MW of the GST tag alone is 26 KDa.
Sequence:	ELRKRLNLEE WILEQLTRLY DCQEEEIPEL EIDVDELLDM ESDDARAARV KELLVDCYKP TEAFISGLLD KIRGMQ
Clone:	4G2
Isotype:	IgG2a
Cross-Reactivity:	Human
Characteristics:	Antibody Reactive Against Recombinant Protein.

Target Details

Target:	PPP1R14B
Alternative Name:	PPP1R14B (PPP1R14B Products)
Background:	Full Gene Name: protein phosphatase 1, regulatory (inhibitor) subunit 14B Synonyms: PHI-1,PLCB3N,PNG,SOM172
Gene ID:	26472
NCBI Accession:	NM_138689

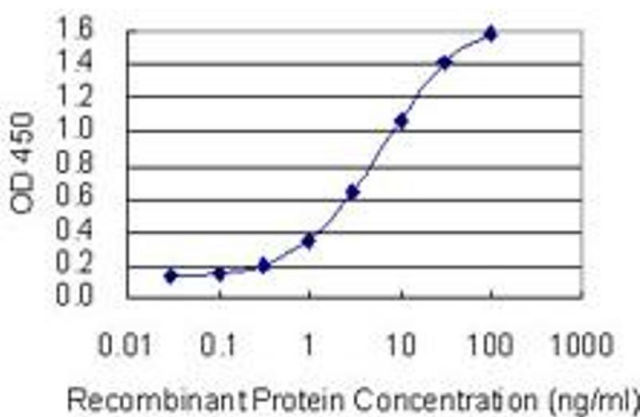
Application Details

Application Notes:	Optimal working dilution should be determined by the investigator.
Restrictions:	For Research Use only

Handling

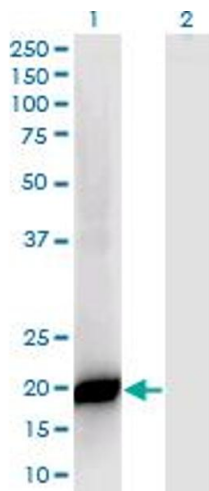
Buffer:	In 1x PBS, pH 7.4
Handling Advice:	Aliquot to avoid repeated freezing and thawing.
Storage:	-20 °C
Storage Comment:	Store at -20°C or lower. Aliquot to avoid repeated freezing and thawing.

Images



ELISA

Image 1. Detection limit for recombinant GST tagged PPP1R14B is 0.1 ng/ml as a capture antibody.

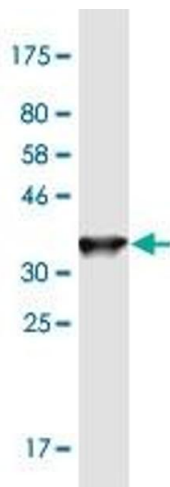


Western Blotting

Image 2. Western Blot analysis of PPP1R14B expression in transfected 293T cell line by PPP1R14B monoclonal antibody (M07), clone 4G2.

Lane 1: PPP1R14B transfected lysate (Predicted MW: 16.17 kDa).

Lane 2: Non-transfected lysate.



Western Blotting

Image 3. Western Blot detection against Immunogen (34.1 kDa).