



[Go to Product page](#)

Datasheet for ABIN949208
anti-FIL1h antibody (AA 1-157)

2 Images

Overview

Quantity:	100 µg
Target:	FIL1h
Binding Specificity:	AA 1-157
Reactivity:	Human
Host:	Mouse
Clonality:	Monoclonal
Conjugate:	This FIL1h antibody is un-conjugated
Application:	Western Blotting (WB), ELISA

Product Details

Purpose:	Mouse monoclonal antibody raised against a full-length recombinant IL1F8.
Immunogen:	IL1F8 (NP_775270.1, 1 a.a. ~ 157 a.a) full-length recombinant protein with GST tag. MW of the GST tag alone is 26 KDa.
Sequence:	MNPQREAAPK SYAIRDSRQM VVWLSGNSLI AAPLSRSIKP VTLHLIACRD TEFSDKEKGN MVYLGIGKGD LCLFCAEIQG KPTLQLKEKN IMDLYVEKKA QKPFLFFHNK EGSTSVFQSV SYPGWFIATS TTSGQPIFLT KERGITNNTN FYLDSVE
Clone:	1E4
Isotype:	IgG2a
Cross-Reactivity:	Human
Characteristics:	Antibody Reactive Against Recombinant Protein.

Target Details

Target:	FIL1h
Alternative Name:	IL1F8 (FIL1h Products)
Background:	Full Gene Name: interleukin 1 family, member 8 (eta) Synonyms: FIL1,FIL1-(ETA),FIL1H,IL-1F8,IL-1H2,IL1-ETA,IL1H2,MGC126880,MGC126882
Gene ID:	27177
NCBI Accession:	NM_173178

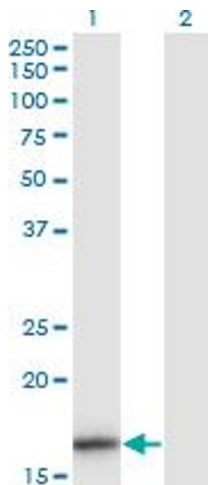
Application Details

Application Notes:	Optimal working dilution should be determined by the investigator.
Restrictions:	For Research Use only

Handling

Buffer:	In 1x PBS, pH 7.4
Handling Advice:	Aliquot to avoid repeated freezing and thawing.
Storage:	-20 °C
Storage Comment:	Store at -20°C or lower. Aliquot to avoid repeated freezing and thawing.

Images

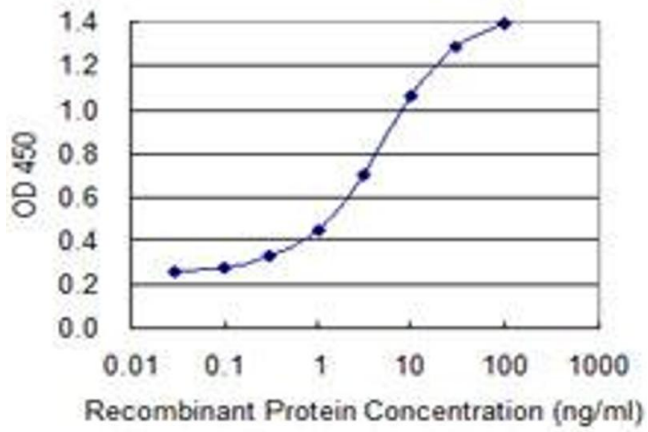


Western Blotting

Image 1. Western Blot analysis of IL1F8 expression in transfected 293T cell line by IL1F8 monoclonal antibody (M01), clone 1E4.

Lane 1: IL1F8 transfected lysate(17.7 KDa).

Lane 2: Non-transfected lysate.



ELISA

Image 2. Detection limit for recombinant GST tagged IL1F8 is 0.1 ng/ml as a capture antibody.