



[Go to Product page](#)

Datasheet for ABIN949221

anti-DLL1 antibody (AA 1-723)

1 Image

Overview

Quantity:	50 µg
Target:	DLL1
Binding Specificity:	AA 1-723
Reactivity:	Human
Host:	Mouse
Clonality:	Polyclonal
Conjugate:	This DLL1 antibody is un-conjugated
Application:	Western Blotting (WB)

Product Details

Purpose:	Mouse polyclonal antibody raised against a full-length human DLL1 protein.
Immunogen:	DLL1 (NP_005609.3, 1 a.a. ~ 723 a.a) full-length human protein.
Sequence:	MGSRCALALA VLSALLCQVW SSGVFELKLQ EFNKKGLLG NRNCCRGGAG PPPCACRTFF RVCLKHYQAS VSPEPPCTYG SAVTPVLGVD SFSLPDGGGA DSAFSNPIRF PFGFTWPGTF SLIIEALHTD SPDDLATENP ERLISRLATQ RHLTVGEEWS QDLHSSGRTD LKYSYRFVCD EHYYGEGCSV FCRPRDDAFG HFTCGERGEK VCNPGWKGPY CTEPICLPGC DEQHGFCDKP GECKCRVGWQ GRYCDECIRY PGCLHGTCQQ PWQCNCQEGW GGLFCNQDLN YCTHHKPKCN GATCTNTGQG SYTCSCRPGY TGATCELGID ECDPSPCKNG GSCTDLENSY SCTCPPGFY KICELSAMTC ADGPCFNGGR CSDSPDGGYS CRCPVGYSGF NCEKKIDYCS SSPCSNGAKC VDLGDAYLCR CQAGFSGRHC DDNVDDCASS PCANGGTCRD GVNDFSCTCP PGYTGRNCSA PVSRCHEAPC HNGATCHERG HRYVCECARG YGGPNCQFLL PELPPGPAVV DLTEKLEGQG GPFPPWVAVCA GVILVLMLLL GCAAVVVCVR LRLQKHRPPA DPCRGETETM NNLANCQREK

Product Details

DISVSIIGAT QIKNTNKKAD FHGDHSADKN GFKARYPAVD YNLVQDLKGD DTAVRDAHSK
RDTKCQPQGS SGEEKGTPTT LRGGEASERK RPDSGCSTSK DTKYQSVYVI SEEKDECVIA TEV

Cross-Reactivity: Human

Characteristics: Antibody reactive against mammalian transfected lysate.

Target Details

Target: DLL1

Alternative Name: DLL1 ([DLL1 Products](#))

Background: Full Gene Name: delta-like 1 (Drosophila)
Synonyms: DELTA1,DL1,Delta

Gene ID: 28514

NCBI Accession: [NM_005618](#)

Pathways: [Notch Signaling](#), [Stem Cell Maintenance](#)

Application Details

Application Notes: Optimal working dilution should be determined by the investigator.

Restrictions: For Research Use only

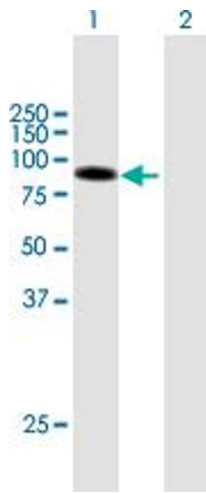
Handling

Buffer: In 1x PBS, pH 7.4

Handling Advice: Aliquot to avoid repeated freezing and thawing.

Storage: -20 °C

Storage Comment: Store at -20°C or lower. Aliquot to avoid repeated freezing and thawing.



Western Blotting

Image 1. Western Blot analysis of DLL1 expression in transfected 293T cell line by DLL1 MaxPab polyclonal antibody.

Lane 1: DLL1 transfected lysate(79.53 KDa).

Lane 2: Non-transfected lysate.