



[Go to Product page](#)

Datasheet for ABIN949223

## anti-OSTM1 antibody (AA 183-282)

### 2 Images

#### Overview

Quantity:	100 µg
Target:	OSTM1
Binding Specificity:	AA 183-282
Reactivity:	Human
Host:	Mouse
Clonality:	Monoclonal
Conjugate:	This OSTM1 antibody is un-conjugated
Application:	Western Blotting (WB), ELISA

#### Product Details

Purpose:	Mouse monoclonal antibody raised against a partial recombinant OSTM1.
Immunogen:	OSTM1 (NP_054747.2, 183 a.a. ~ 282 a.a) partial recombinant protein with GST tag. MW of the GST tag alone is 26 KDa.
Sequence:	SNSTVYFLNL FNHTLTCFEH NLQNAHSLL QTKNYSEVCK NCREAYKTLS SLYSEMQKMN ELENKAEPGT HLCIDVEDAM NITRKLWSRT FNCSVPCSDT
Clone:	4H1
Isotype:	IgG2a
Cross-Reactivity:	Human
Characteristics:	Antibody Reactive Against Recombinant Protein.

## Target Details

Target:	OSTM1
Alternative Name:	OSTM1 ( <a href="#">OSTM1 Products</a> )
Background:	Full Gene Name: osteopetrosis associated transmembrane protein 1 Synonyms: GIPN, GL, HSPC019, OPTB5
Gene ID:	28962
NCBI Accession:	<a href="#">NM_014028</a>

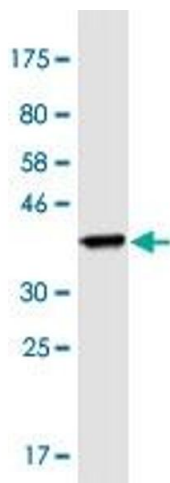
## Application Details

Application Notes:	Optimal working dilution should be determined by the investigator.
Restrictions:	For Research Use only

## Handling

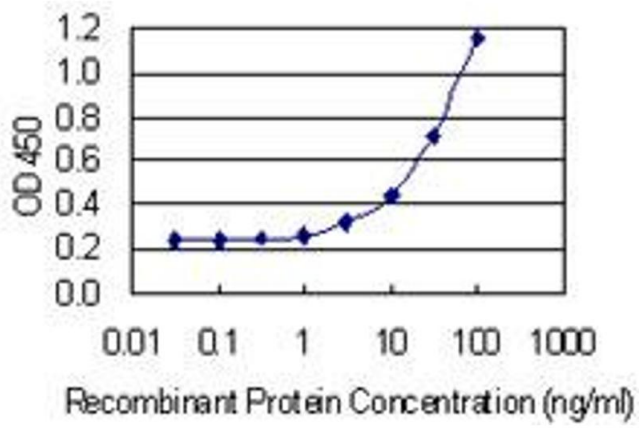
Buffer:	In 1x PBS, pH 7.4
Handling Advice:	Aliquot to avoid repeated freezing and thawing.
Storage:	-20 °C
Storage Comment:	Store at -20°C or lower. Aliquot to avoid repeated freezing and thawing.

## Images



### Western Blotting

**Image 1.** Western Blot detection against Immunogen (36.74 kDa).



## ELISA

**Image 2.** Detection limit for recombinant GST tagged OSTM1 is 1 ng/ml as a capture antibody.