

Datasheet for ABIN949235
anti-CLEC2D antibody (AA 1-191)[Go to Product page](#)

1 Image

Overview

Quantity:	50 µg
Target:	CLEC2D
Binding Specificity:	AA 1-191
Reactivity:	Human
Host:	Mouse
Clonality:	Polyclonal
Conjugate:	This CLEC2D antibody is un-conjugated
Application:	Western Blotting (WB)

Product Details

Purpose:	Mouse polyclonal antibody raised against a full-length human CLEC2D protein.
Immunogen:	CLEC2D (NP_037401.1, 1 a.a. ~ 191 a.a) full-length human protein.
Sequence:	MHDSNNVEKD ITPSELPANP GCLHSKEHSI KATLIWRLFF LIMFLTIIVC GMVAALSAIR ANCHQEPSVC LQAACPESWI GFQRKCFYFS DDTKNWTSSQ RFCDSQDADL AQVESFQELN FLLRYKGPSD HWIGLSREQG QPWKWINGTE WTRQFPILGA GECAYLNDKG ASSARHYTER KWICKSKSDIH V
Cross-Reactivity:	Human
Characteristics:	Antibody reactive against mammalian transfected lysate.

Target Details

Target:	CLEC2D
---------	--------

Target Details

Alternative Name:	CLEC2D (CLEC2D Products)
Background:	Full Gene Name: C-type lectin domain family 2, member D Synonyms: CLAX,LLT1,OCIL
Gene ID:	29121
NCBI Accession:	NM_013269
Pathways:	Regulation of Leukocyte Mediated Immunity

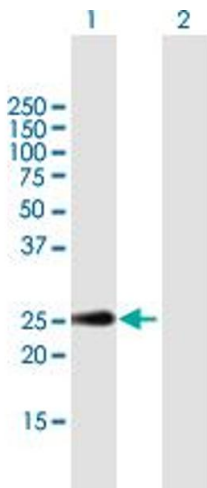
Application Details

Application Notes:	Optimal working dilution should be determined by the investigator.
Restrictions:	For Research Use only

Handling

Buffer:	In 1x PBS, pH 7.4
Handling Advice:	Aliquot to avoid repeated freezing and thawing.
Storage:	-20 °C
Storage Comment:	Store at -20°C or lower. Aliquot to avoid repeated freezing and thawing.

Images



Western Blotting

Image 1. Western Blot analysis of CLEC2D expression in transfected 293T cell line by CLEC2D MaxPab polyclonal antibody.

Lane 1: CLEC2D transfected lysate(21.01 KDa).

Lane 2: Non-transfected lysate.