

Datasheet for ABIN949236

anti-CLEC2D antibody (AA 1-154)



[Go to Product page](#)

1 Image

1 Publication

Overview

Quantity:	100 µg
Target:	CLEC2D
Binding Specificity:	AA 1-154
Reactivity:	Human
Host:	Mouse
Clonality:	Monoclonal
Conjugate:	This CLEC2D antibody is un-conjugated
Application:	ELISA, Western Blotting (WB)

Product Details

Purpose:	Mouse monoclonal antibody raised against a full-length recombinant CLEC2D.
Immunogen:	CLEC2D (AAH19883, 1 a.a. ~ 154 a.a) full-length recombinant protein with GST tag. MW of the GST tag alone is 26 KDa.
Sequence:	MHDSNNVEKD ITPSELPANP GCVHSKEHSI KATLIWRLFF LIMFLTIIVC GMVAALSAIR ANCHQEPSVC LQAACPESWI GFQRKCFYFS DDTKNWTSSQ RFCDSQDADL AQVESFQELN FLLRYKGPSD HWIGLSREQG QPWKWINGTE WTRQ
Clone:	2E11
Isotype:	IgG2a
Cross-Reactivity:	Human
Characteristics:	Antibody Reactive Against Recombinant Protein.

Target Details

Target:	CLEC2D
Alternative Name:	CLEC2D (CLEC2D Products)
Background:	Full Gene Name: C-type lectin domain family 2, member D Synonyms: CLAX,LLT1,OCIL
Gene ID:	29121
Pathways:	Regulation of Leukocyte Mediated Immunity

Application Details

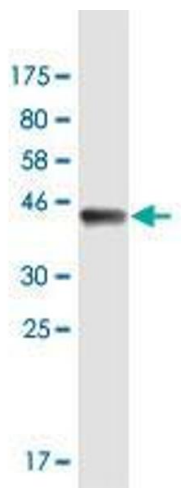
Application Notes:	Optimal working dilution should be determined by the investigator.
Restrictions:	For Research Use only

Handling

Buffer:	In 1x PBS, pH 7.4
Handling Advice:	Aliquot to avoid repeated freezing and thawing.
Storage:	-20 °C
Storage Comment:	Store at -20°C or lower. Aliquot to avoid repeated freezing and thawing.

Publications

Product cited in:	Williams, Eaton, Jones, Rengan, Burshtyn: "Vaccinia virus Western Reserve induces rapid surface expression of a host molecule detected by the antibody 4C7 that is distinct from CLEC2D." in: Microbiology and immunology , Vol. 60, Issue 11, pp. 754-769, (2016) (PubMed).
-------------------	---



Western Blotting

Image 1. Western Blot detection against Immunogen (42.68 kDa) .