



Datasheet for ABIN949241  
**anti-C12ORF24 antibody (AA 1-273)**



[Go to Product page](#)

2 Images

Overview

Quantity:	100 µg
Target:	C12ORF24 (C12orf24)
Binding Specificity:	AA 1-273
Reactivity:	Human
Host:	Rabbit
Clonality:	Polyclonal
Conjugate:	This C12ORF24 antibody is un-conjugated
Application:	Western Blotting (WB), Immunofluorescence (IF)

Product Details

Purpose:	Rabbit polyclonal antibody raised against a full-length human C12orf24 protein.
Immunogen:	C12orf24 (AAH20967.1, 1 a.a. ~ 273 a.a) full-length human protein.
Sequence:	MLGQLLPHTA RGLGAAEMPG QGPGSDWTER SSSAEPPIVA GTEGGGGGSA GYSCYQNSKG SDRIKDGYSV NSHIAKLQEL WKTPQNQTIH LSKSMMEASF FKHPDLTTGQ KRYLCSIAKI YNANYLKMLM KRQYMHVLQH SSQKPGVLTH HRSRLSSRYS QKQHYPCTTW RHQLEREDSG SSDIAAASAP EMLIQHSLWR PVRNKEGIKT GYASKTRCKS LKIFRRPRKL FMQTVSSDDS ESHMSEEKKE EDLLNFMQS MSIEEQGEHL MLT
Cross-Reactivity:	Human
Characteristics:	Antibody reactive against mammalian transfected lysate.

## Target Details

Target:	C12ORF24 (C12orf24)
Alternative Name:	C12orf24 ( <a href="#">C12orf24 Products</a> )
Background:	Full Gene Name: chromosome 12 open reading frame 24 Synonyms: HSU79274
Gene ID:	29902

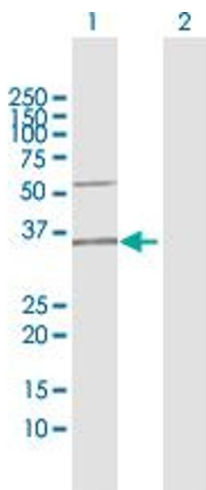
## Application Details

Application Notes:	Optimal working dilution should be determined by the investigator.
Restrictions:	For Research Use only

## Handling

Buffer:	In 1x PBS, pH 7.4
Handling Advice:	Aliquot to avoid repeated freezing and thawing.
Storage:	-20 °C
Storage Comment:	Store at -20°C or lower. Aliquot to avoid repeated freezing and thawing.

## Images

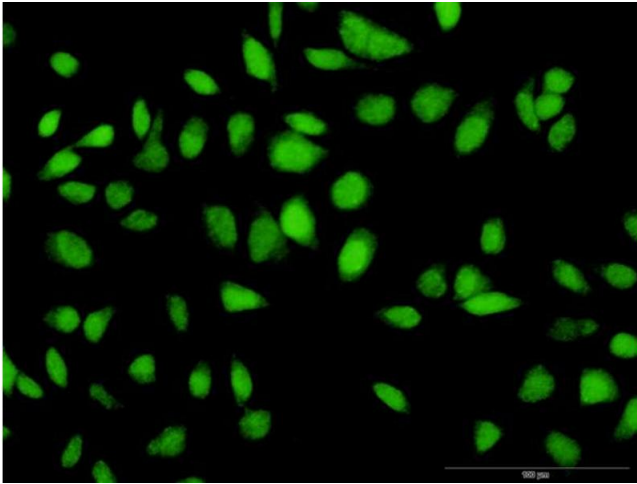


### Western Blotting

**Image 1.** Western Blot analysis of C12orf24 expression in transfected 293T cell line by C12orf24 MaxPab polyclonal antibody.

Lane 1: C12orf24 transfected lysate(30.80 KDa).

Lane 2: Non-transfected lysate.



### Immunofluorescence

**Image 2.** Immunofluorescence of purified MaxPab antibody to C12orf24 on HeLa cell. [antibody concentration 10 ug/ml]