



[Go to Product page](#)

Datasheet for ABIN949250

## anti-SLC39A3 antibody (AA 1-314)

2 Images

1 Publication

### Overview

Quantity:	50 µg
Target:	SLC39A3
Binding Specificity:	AA 1-314
Reactivity:	Human
Host:	Mouse
Clonality:	Polyclonal
Conjugate:	This SLC39A3 antibody is un-conjugated
Application:	Western Blotting (WB)

### Product Details

Purpose:	Mouse polyclonal antibody raised against a full-length human SLC39A3 protein.
Immunogen:	SLC39A3 (NP_653165.2, 1 a.a. ~ 314 a.a) full-length human protein.
Sequence:	MVKLLVAKIL CMVGVFFFML LGSLLPVKII ETDFEKAHRS KKILSLCNTF GGGVFLATCF NALLPAVREK LQKVLSLGHI STDYPLAETI LLLGFFMTVF LEQLILTRFK EKPSFIDLET FNAGSDVGS D SEYESPFMGG ARGHALYVEP HGHGPSLSVQ GLSRASPVRL LSLAFALSAH SVFEGLALGL QEEGEKVVSL FVGVAVHETL VAVALGISMA RSAMPLRDA A KLA VTVSAMI PLGIGLGLGI ESAQGVPGSV ASVLLQGLAG GTFLFITFLE ILAKELEEK S DRLLKVLFLV LGYTVLAGMV FLKW
Cross-Reactivity:	Human
Characteristics:	Antibody reactive against mammalian transfected lysate.

## Target Details

---

Target:	SLC39A3
Alternative Name:	SLC39A3 ( <a href="#">SLC39A3 Products</a> )
Background:	Full Gene Name: solute carrier family 39 (zinc transporter), member 3 Synonyms: ZIP3
Gene ID:	29985
NCBI Accession:	<a href="#">NM_144564</a>
Pathways:	<a href="#">NF-kappaB Signaling</a> , <a href="#">Neurotrophin Signaling Pathway</a> , <a href="#">Autophagy</a>

## Application Details

---

Application Notes:	Optimal working dilution should be determined by the investigator.
Restrictions:	For Research Use only

## Handling

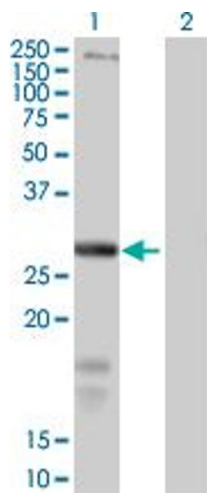
---

Buffer:	In 1x PBS, pH 7.4
Handling Advice:	Aliquot to avoid repeated freezing and thawing.
Storage:	-20 °C
Storage Comment:	Store at -20°C or lower. Aliquot to avoid repeated freezing and thawing.

## Publications

---

Product cited in:	Kanninen, Grubman, Caragounis, Duncan, Parker, Lidgerwood, Volitakis, Ganio, Crouch, White: "Altered biometal homeostasis is associated with CLN6 mRNA loss in mouse neuronal ceroid lipofuscinosis." in: <b>Biology open</b> , Vol. 2, Issue 6, pp. 635-46, (2013) ( <a href="#">PubMed</a> ).
-------------------	---

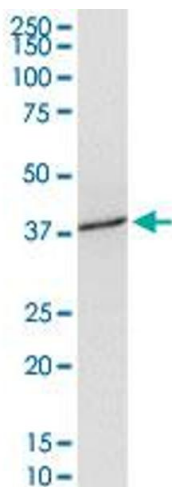


#### Western Blotting

**Image 1.** Western Blot analysis of SLC39A3 expression in transfected 293T cell line by SLC39A3 MaxPab polyclonal antibody.

Lane 1: SLC39A3 transfected lysate(16.94 KDa).

Lane 2: Non-transfected lysate.



#### Western Blotting

**Image 2.** SLC39A3 MaxPab polyclonal antibody. Western Blot analysis of SLC39A3 expression in human kidney.