



Datasheet for ABIN949257
anti-STOML2 antibody (AA 1-356)



[Go to Product page](#)

4 Images

Overview

Quantity:	100 µL
Target:	STOML2
Binding Specificity:	AA 1-356
Reactivity:	Human
Host:	Rabbit
Clonality:	Polyclonal
Conjugate:	This STOML2 antibody is un-conjugated
Application:	Western Blotting (WB), Immunoprecipitation (IP)

Product Details

Purpose:	Rabbit polyclonal antibody raised against a full-length human STOML2 protein.
Immunogen:	STOML2 (NP_038470.1, 1 a.a. ~ 356 a.a) full-length human protein.
Sequence:	MLARAARGTG ALLLRGSLLA SGRAPRRASS GLPRNTVVLV VPQQEAWVVE RMGRFHRILE PGLNILIPVL DRIRYVQSLK EIVINVPEQS AVTLDNVTLQ IDGVLYLRIM DPYKASYGVE DPEYAVTQLA QTTMRSELGK LSLDKVFRER ESLNASIVDA INQAADCWGI RCLRYEIKDI HVPPRVKESM QMQVEAERRK RATVLESEGT RESAINVAEG KKQAQILASE AEKAEQINQA AGEASAVLAK AKAKAEAIRI LAAALTQHNG DAAASLTVAE QYVSFAFSKLA KDSNTILLPS NPGDVTSMVA QAMGVYGALT KAPVPGTPDS LSSGSSRDVQ GTDASLDEEL DRVKMS
Cross-Reactivity:	Human
Characteristics:	Antibody reactive against mammalian transfected lysate.

Target Details

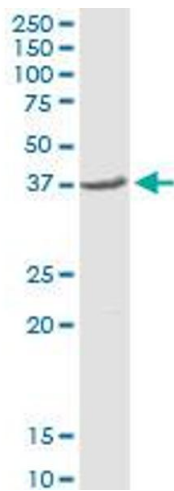
Target:	STOML2
Alternative Name:	STOML2 (STOML2 Products)
Background:	Full Gene Name: stomatin (EPB72)-like 2 Synonyms: HSPC108,SLP-2
Gene ID:	30968
NCBI Accession:	NM_013442
Pathways:	SARS-CoV-2 Protein Interactome , The Global Phosphorylation Landscape of SARS-CoV-2 Infection

Application Details

Application Notes:	Optimal working dilution should be determined by the investigator.
Restrictions:	For Research Use only

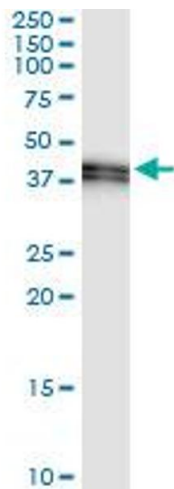
Handling

Format:	Liquid
Buffer:	No additive
Preservative:	Without preservative
Handling Advice:	Aliquot to avoid repeated freezing and thawing.
Storage:	-20 °C
Storage Comment:	Store at -20°C or lower. Aliquot to avoid repeated freezing and thawing.



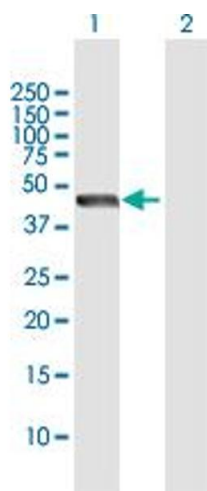
Western Blotting

Image 1. STOML2 MaxPab rabbit polyclonal antibody. Western Blot analysis of STOML2 expression in human kidney.



Immunoprecipitation

Image 2. Immunoprecipitation of STOML2 transfected lysate using anti-STOML2 MaxPab rabbit polyclonal antibody and Protein A Magnetic Bead, and immunoblotted with STOML2 purified MaxPab mouse polyclonal antibody (B01P).



Western Blotting

Image 3. Western Blot analysis of STOML2 expression in transfected 293T cell line by STOML2 MaxPab polyclonal antibody.

Lane 1: STOML2 transfected lysate(38.50 KDa).

Lane 2: Non-transfected lysate.

Please check the [product details page](#) for more images. Overall 4 images are available for ABIN949257.