



[Go to Product page](#)

Datasheet for ABIN949278
anti-LAP3 antibody (AA 1-519)

2 Images

Overview

Quantity:	100 µL
Target:	LAP3
Binding Specificity:	AA 1-519
Reactivity:	Human
Host:	Rabbit
Clonality:	Polyclonal
Conjugate:	This LAP3 antibody is un-conjugated
Application:	Western Blotting (WB), Immunoprecipitation (IP)

Product Details

Purpose:	Rabbit polyclonal antibody raised against a full-length human LAP3 protein.
Immunogen:	LAP3 (NP_056991.2, 1 a.a. ~ 519 a.a) full-length human protein.
Sequence:	MFLLPLPAAG RVVVRRLA VR RFGSRSLSTA DMTKGLVLGI YSKEKEDDVP QFTSAGENFD KLLAGKLRET LNISGPPLKA GKTRTFYGLH QDFPSVVLVG LGKKAAGIDE QENWHEGKEN IRAAVAAGCR QIQDLELSSV EVDPCGDAQA AAEGAVLGLY EYDDLKQKKK MAVSAKLYGS GDQEAWQKGV LFASGQNLAR QLMETPANEM TPTRFAEII KNLKSASSKT EVHIRPKSWI EEQAMGSFLS VAKGSDEPPV FLEIHYKGSP NANEPPLV FV GKGITFDSSG ISIKASANMD LMRADMGGA TICAIVSAA KLNLPINIIG LAPLCENMPS GKANKPGDVV RAKNGKTIQV DNTDAEGR LI LADALCYAHT FNPVKVILNAA TLTGAMDVAL GSGATGVFTN SSWLWNLKFE AS IETGDRVW RMPLFEHYTR QVVD CQLADV NNIGKYRSAG ACTAA AFLKE FVTHPKWAHL DIAGVMTNKD E VPYLRKGMT GRPTRTLIEF LLRFSQDNA

Product Details

Cross-Reactivity:	Human
Characteristics:	Antibody reactive against mammalian transfected lysate.

Target Details

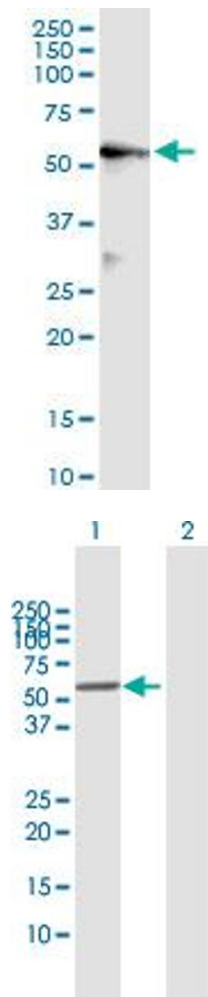
Target:	LAP3
Alternative Name:	LAP3 (LAP3 Products)
Background:	Full Gene Name: leucine aminopeptidase 3 Synonyms: LAP,LAPEP,PEPS
Gene ID:	51056
NCBI Accession:	NM_015907

Application Details

Application Notes:	Optimal working dilution should be determined by the investigator.
Restrictions:	For Research Use only

Handling

Format:	Liquid
Buffer:	No additive
Preservative:	Without preservative
Handling Advice:	Aliquot to avoid repeated freezing and thawing.
Storage:	-20 °C
Storage Comment:	Store at -20°C or lower. Aliquot to avoid repeated freezing and thawing.



Immunoprecipitation

Image 1. Immunoprecipitation of LAP3 transfected lysate using anti-LAP3 MaxPab rabbit polyclonal antibody and Protein A Magnetic Bead , and immunoblotted with LAP3 purified MaxPab mouse polyclonal antibody (B01P) .

Western Blotting

Image 2. Western Blot analysis of LAP3 expression in transfected 293T cell line by LAP3 MaxPab polyclonal antibody.

Lane 1: LAP3 transfected lysate(56.20 KDa).

Lane 2: Non-transfected lysate.