



[Go to Product page](#)

Datasheet for ABIN949306
anti-FKBP11 antibody (AA 1-201)

2 Images

Overview

Quantity:	100 µL
Target:	FKBP11
Binding Specificity:	AA 1-201
Reactivity:	Human
Host:	Rabbit
Clonality:	Polyclonal
Conjugate:	This FKBP11 antibody is un-conjugated
Application:	Western Blotting (WB), Immunoprecipitation (IP)

Product Details

Purpose:	Rabbit polyclonal antibody raised against a full-length human FKBP11 protein.
Immunogen:	FKBP11 (NP_057678.1, 1 a.a. ~ 201 a.a) full-length human protein.
Sequence:	MTLRPSLLPL HLLLLLLLSA AVCRAEAGLE TESPVRTLQV ETLVEPPEPC AEPAAFQDTL HIHYTGSLVD GRIIDTSLTR DPLVIELGQK QVIPGLEQSL LDMCVGEKRR AIIPSHLAYG KRGFPPSVPA DAVVQYDVEL IALIRANYWL KLVKGILPLV GMAMVPALLG LIGYHLYRKA NRPKVSKKKL KEEKRNKSKK K
Cross-Reactivity:	Human
Characteristics:	Antibody reactive against mammalian transfected lysate.

Target Details

Target:	FKBP11
---------	--------

Target Details

Alternative Name:	FKBP11 (FKBP11 Products)
Background:	Full Gene Name: FK506 binding protein 11, 19 kDa Synonyms: FKBP19,MGC54182
Gene ID:	51303
NCBI Accession:	NM_016594

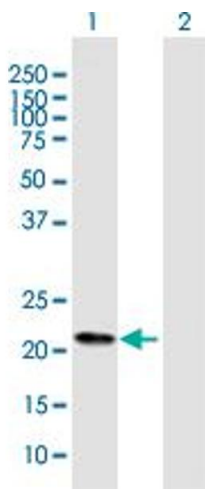
Application Details

Application Notes:	Optimal working dilution should be determined by the investigator.
Restrictions:	For Research Use only

Handling

Format:	Liquid
Buffer:	No additive
Preservative:	Without preservative
Handling Advice:	Aliquot to avoid repeated freezing and thawing.
Storage:	-20 °C
Storage Comment:	Store at -20°C or lower. Aliquot to avoid repeated freezing and thawing.

Images

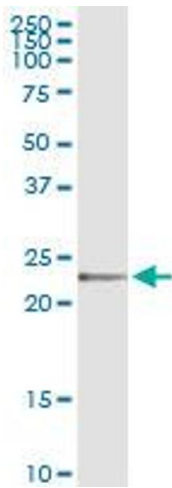


Western Blotting

Image 1. Western Blot analysis of FKBP11 expression in transfected 293T cell line by FKBP11 MaxPab polyclonal antibody.

Lane 1: FKBP11 transfected lysate(22.20 KDa).

Lane 2: Non-transfected lysate.



Immunoprecipitation

Image 2. Immunoprecipitation of FKBP11 transfected lysate using anti-FKBP11 MaxPab rabbit polyclonal antibody and Protein A Magnetic Bead , and immunoblotted with FKBP11 purified MaxPab mouse polyclonal antibody (B01P) .