

Datasheet for ABIN949312  
**anti-Cytokeratin 2 antibody (AA 1-638)**



[Go to Product page](#)

1 Image

Overview

Quantity:	50 µg
Target:	Cytokeratin 2 (KRT76)
Binding Specificity:	AA 1-638
Reactivity:	Human
Host:	Mouse
Clonality:	Polyclonal
Conjugate:	This Cytokeratin 2 antibody is un-conjugated
Application:	Western Blotting (WB)

Product Details

Purpose:	Mouse polyclonal antibody raised against a full-length human KRT76 protein.
Immunogen:	KRT76 (NP_056932.1, 1 a.a. ~ 638 a.a) full-length human protein.
Sequence:	MNRQVCKKSF SGRSQGFSGR SAVVSGSSRM SCVARSGGAG GGACGFRSGA GSFGSRSLYN LGSNKISIS VAAGSSRAGG FGGRRSSCGF AGGYGGGFGG SYGGGFGGGR GVGSGFGGAG GFGGAGGFGG PGVFGGPGSF GPGGGFPGG FPGGIQEVIV NQSLQLPLNV EIDPQIGQVK AQEREQIKTL NNKFASFIDK VRFLEQQNKV LETKWELLQQ QTTGSGPSSL EPCFESYISF LCKQLDSSLG ERGNLEGELK SMQDLVEDFK KKYEDEINKR TAAENEFVGL KKDVDAAFMN KVELQAKVDS LTDEVSFLRT LYEMELSQMQ SHASDTSVVL SMDNNRCLDL GSIIAEVRTQ YEEIAQRSKS EAEALYQTKL GELQTTAGRH GDDLRLNTKSE IMELNRMIQR LRAEIENVKK QANLQTAIA EAEQRGEMAL KDANAKLQDL QTALQKAKDD LARLLRDYQE LMNVKLALDV EIATYRKLE GEECRMSGEC QSAVCISVVS NVTSTSGSSG SSRGVFGGVS GSGSGGYKGG SSSSSSSGYG VSGGSGSGYG GVSSGSTGGR GSSGSYQSSS SGSRLGGAGS ISVSHSGMGS

## Product Details

---

SSGSIQTSGG SGYKSGGGGS TSIRFSQTTS SSQHSSTK

Cross-Reactivity: Human

Characteristics: Antibody reactive against mammalian transfected lysate.

## Target Details

---

Target: Cytokeratin 2 (KRT76)

Alternative Name: KRT76 ([KRT76 Products](#))

Background: Full Gene Name: keratin 76  
Synonyms: HUMCYT2A,KRT2B,KRT2P

Gene ID: 51350

NCBI Accession: [NM\\_015848](#)

## Application Details

---

Application Notes: Optimal working dilution should be determined by the investigator.

Restrictions: For Research Use only

## Handling

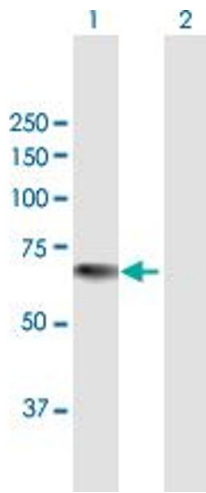
---

Buffer: In 1x PBS, pH 7.4

Handling Advice: Aliquot to avoid repeated freezing and thawing.

Storage: -20 °C

Storage Comment: Store at -20°C or lower. Aliquot to avoid repeated freezing and thawing.



### Western Blotting

**Image 1.** Western Blot analysis of KRT76 expression in transfected 293T cell line by KRT76 MaxPab polyclonal antibody.

Lane 1: KRT2B transfected lysate(70.18 KDa).

Lane 2: Non-transfected lysate.