



[Go to Product page](#)

Datasheet for ABIN949344  
**anti-ATP6V1H antibody (AA 1-483)**

2 Images

Overview

Quantity:	100 µL
Target:	ATP6V1H
Binding Specificity:	AA 1-483
Reactivity:	Human
Host:	Rabbit
Clonality:	Polyclonal
Conjugate:	This ATP6V1H antibody is un-conjugated
Application:	Western Blotting (WB), Immunoprecipitation (IP)

Product Details

Purpose:	Rabbit polyclonal antibody raised against a full-length human ATP6V1H protein.
Immunogen:	ATP6V1H (NP_057025.2, 1 a.a. ~ 483 a.a) full-length human protein.
Sequence:	MTKMDIRGAV DAAVPTNIIA AKAAEVRANK VNWQSYLQGQ MISAEDCEFI QRFEMKRSPE EKQEMLQTEG SQCAKTFINL MTHICKEQTV QYILTMVDDM LQENHQRVSI FFDYARCSKN TAWPYFLPML NRQDPFTVHM AARIIAKLAA WGKELMEGSD LNYFFNWIKT QLSSQKLRGS GVAVETGTVS SSDSSQYVQC VAGCLQLMLR VNEYRFAWVE ADGVNCIMGV LSNKCGFQLQ YQMIFSIWLL AFSPQMCEHL RRYNIIPVLS DILQESVKEK VTRIILAAFR NFLEKSTERE TRQEYALAMI QCKVLKQLEN LEQQKYDDED ISEDIKFLLE KLGESVQDLS SFDEYSSELK SGRLEWSPVH KSEKFWRENA VRLNEKNYEL LKILTKLLEV SDDPQVLAVA AHDVGEYVRH YPRGKRVIEQ LGGKQLVMNH MHHEDQQVRY NALLAVQKLM VHNWEYLGKQ LQSEQPQTAA ARS

## Product Details

---

Cross-Reactivity:	Human
Characteristics:	Antibody reactive against mammalian transfected lysate.

## Target Details

---

Target:	ATP6V1H
Alternative Name:	ATP6V1H ( <a href="#">ATP6V1H Products</a> )
Background:	Full Gene Name: ATPase, H <sup>+</sup> transporting, lysosomal 50/57 kDa, V1 subunit H Synonyms: CGI-11,MSTP042,NBP1,SFD,SFDalpha,SFDbeta,VMA13
Gene ID:	51606
NCBI Accession:	<a href="#">NM_015941</a>
Pathways:	<a href="#">Transition Metal Ion Homeostasis</a> , <a href="#">Proton Transport</a>

## Application Details

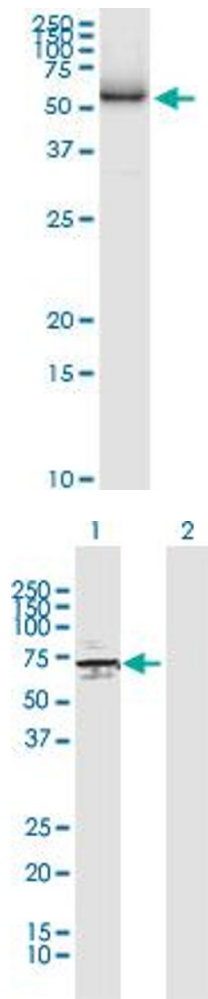
---

Application Notes:	Optimal working dilution should be determined by the investigator.
Restrictions:	For Research Use only

## Handling

---

Format:	Liquid
Buffer:	No additive
Preservative:	Without preservative
Handling Advice:	Aliquot to avoid repeated freezing and thawing.
Storage:	-20 °C
Storage Comment:	Store at -20°C or lower. Aliquot to avoid repeated freezing and thawing.



### Immunoprecipitation

**Image 1.** Immunoprecipitation of ATP6V1H transfected lysate using anti-ATP6V1H MaxPab rabbit polyclonal antibody and Protein A Magnetic Bead , and immunoblotted with ATP6V1H purified MaxPab mouse polyclonal antibody (B01P) .

### Western Blotting

**Image 2.** Western Blot analysis of ATP6V1H expression in transfected 293T cell line by ATP6V1H MaxPab polyclonal antibody.

Lane 1: ATP6V1H transfected lysate(55.90 KDa).

Lane 2: Non-transfected lysate.