

Datasheet for ABIN94935

**anti-Alkaline Phosphatase antibody****1** Image**1** Publication[Go to Product page](#)

## Overview

Quantity:	100 µg
Target:	Alkaline Phosphatase (ALP)
Reactivity:	Cow
Host:	Rabbit
Clonality:	Polyclonal
Conjugate:	This Alkaline Phosphatase antibody is un-conjugated
Application:	Western Blotting (WB), ELISA, Immunohistochemistry (IHC)

## Product Details

Immunogen:	Alkaline Phosphatase [Calf Intestine] Immunogen Type: Native Protein
Isotype:	IgG
Cross-Reactivity (Details):	Cross reactivity against Alkaline Phosphatase from other tissues and species may occur but have not been specifically determined.
Purity:	Anti-ALKALINE PHOSPHATASE is an IgG fraction antibody purified from monospecific antiserum by a multi-step process which includes delipidation, salt fractionation and ion exchange chromatography followed by extensive dialysis against the buffer stated above. Assay by immunoelectrophoresis resulted in a single precipitin arc against anti-Rabbit Serum as well as purified and partially purified Alkaline Phosphatase [Calf Intestine].
Endotoxin Level:	Low Endotoxin : No

## Target Details

Target:	Alkaline Phosphatase (ALP)
Alternative Name:	Alkaline Phosphatase ( <a href="#">ALP Products</a> )
Background:	Synonyms: Alkaline phosphomonoesterase antibody, ALPI antibody, Glycerophosphatase antibody, IAP antibody, Intestinal alkaline phosphatase antibody, Kasahara isozyme antibody
Gene ID:	280993
UniProt:	<a href="#">P19111</a>

## Application Details

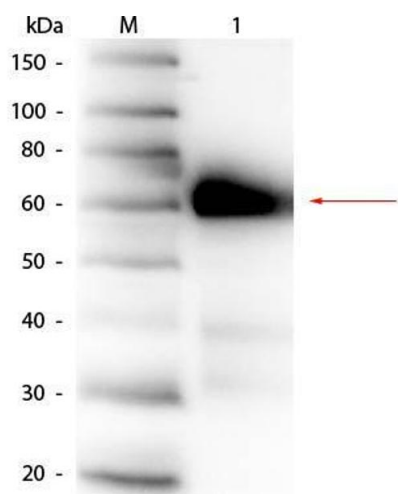
Application Notes:	ELISA Dilution: 1:20.000 - 1:100.000 Immunohistochemistry Dilution: 1:1.000 - 1:5.000 Western Blot Dilution: 1:2.000 - 1:10.000
Restrictions:	For Research Use only

## Handling

Format:	Liquid
Buffer:	0.02 M Potassium Phosphate, 0.15 M Sodium Chloride, pH 7.2
Handling Advice:	Store the vial at -20°C or below after dilution. Avoid cycles of freezing and thawing.
Storage:	-20 °C
Storage Comment:	Store vial at -20 °C or below prior to opening. This vial contains a relatively low volume of reagent (25 µL). To minimize loss of volume dilute 1:10 by adding 225 µL of the buffer stated above directly to the vial. Recap, mix thoroughly and briefly centrifuge to collect the volume at the bottom of the vial. Use this intermediate dilution when calculating final dilutions as recommended below.
Expiry Date:	Expiration date is one (1) year from date of opening.

## Publications

Product cited in:	Miller, Tejada, Gazzano-Santoro: "Development of an ELISA based bridging assay as a surrogate measure of ADCC." in: <b>Journal of immunological methods</b> , (2012) ( <a href="#">PubMed</a> ).
-------------------	--



Western Blotting

**Image 1.** Western Blot of Rabbit anti-Alkaline Phosphatase (Calf Intestine) Antibody. Lane 1: Alkaline Phosphatase (Calf Intestine). Load: 50 ng per lane. Primary antibody: Rabbit anti-Alkaline Phosphatase (Calf Intestine) Antibody at 1:1,000 overnight at 4°C. Secondary antibody: HRP rabbit secondary antibody at 1:40,000 for 30 min at RT. Block: ABIN925618 for 30 min at RT. Predicted/Observed size: 57 kDa, 60 kDa for Alkaline Phosphatase (Calf Intestine).