



[Go to Product page](#)

Datasheet for ABIN949367

anti-Rcs1/Fam64a antibody (AA 1-248)

2 Images

Overview

Quantity:	100 µg
Target:	Rcs1/Fam64a (FAM64A)
Binding Specificity:	AA 1-248
Reactivity:	Human
Host:	Rabbit
Clonality:	Polyclonal
Conjugate:	This Rcs1/Fam64a antibody is un-conjugated
Application:	Western Blotting (WB)

Product Details

Purpose:	Rabbit polyclonal antibody raised against a full-length human FAM64A protein.
Immunogen:	FAM64A (AAH05004.1, 1 a.a. ~ 248 a.a) full-length human protein.
Sequence:	MASRWQNMGT SVRRRSLQHQ EQLEDSKELQ PVVSHQETSV GALGSLCRQF QRRLPLRAVN LNLRAGPSWK RLETPEPGQQ GLQAAARSAK SALGAVSQRI QESCQSGTKW LVETQVKARR RKRGAQKGG SPTHLSLQKS TRLSGAAPAH SAADPWEKEH HRLSVRMGSH AHPLRRSRRE AAFRSPYSST EPLCSPESD SDLEPVGAGI QHLQKLSQEL DEAIMAEERK QALSDRQGF LKDVYASP
Cross-Reactivity:	Human
Characteristics:	Antibody reactive against mammalian transfected lysate.

Target Details

Target:	Rcs1/Fam64a (FAM64A)
Alternative Name:	FAM64A (FAM64A Products)
Background:	Full Gene Name: family with sequence similarity 64, member A Synonyms: FLJ10156,FLJ10491
Gene ID:	54478

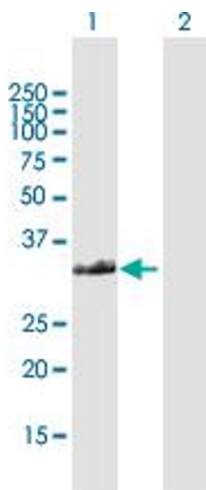
Application Details

Application Notes:	Optimal working dilution should be determined by the investigator.
Restrictions:	For Research Use only

Handling

Buffer:	In 1x PBS, pH 7.4
Handling Advice:	Aliquot to avoid repeated freezing and thawing.
Storage:	-20 °C
Storage Comment:	Store at -20°C or lower. Aliquot to avoid repeated freezing and thawing.

Images

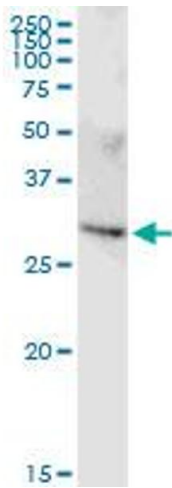


Western Blotting

Image 1. Western Blot analysis of FAM64A expression in transfected 293T cell line by FAM64A MaxPab polyclonal antibody.

Lane 1: FAM64A transfected lysate(27.39 kDa).

Lane 2: Non-transfected lysate.



Western Blotting

Image 2. FAM64A MaxPab rabbit polyclonal antibody. Western Blot analysis of FAM64A expression in human liver.