



Datasheet for ABIN949378
anti-KLHDC4 antibody (AA 1-520)



[Go to Product page](#)

3 Images

Overview

Quantity:	100 µL
Target:	KLHDC4
Binding Specificity:	AA 1-520
Reactivity:	Human
Host:	Rabbit
Clonality:	Polyclonal
Conjugate:	This KLHDC4 antibody is un-conjugated
Application:	Western Blotting (WB), Immunoprecipitation (IP)

Product Details

Purpose:	Rabbit polyclonal antibody raised against a full-length human KLHDC4 protein.
Immunogen:	KLHDC4 (NP_060036.2, 1 a.a. ~ 520 a.a) full-length human protein.
Sequence:	MGKKGKKEKK GRGAEKTAAK MEKKVSKRSR KEEEDLEALI AHFQTLDAKR TQTVELPCPP PSPRLNASLS VHPEKDELIL FGGEYFNGQK TFLYNELVYV NTRKDTWTKV DIPSPPPRRC AHQAVVVPQG GGQLWVFGGE FASPNGEQFY HYKDLWVLHL ATKTWVQVKS TGGPSGRSGH RMVAWKRQLI LFGGFHESTR DYIYYNDVYA FNLDFTWSK LSPSGTGPTP RSGCQMSVTP QGGIVVYGGY SKQRVKKDVD KGTRHSDMFL LKPEDGREDK VVWTRMNPSG VKPTPRSGFS VAMAPNHQTL FFGGVCDEEE EESLSGEFFN DLYFYDATRN RWFEGQLKGP KSEKKKRRRG RKEEPEGGSR PACGGAGTQG PVQLVKEVA EDGTVVTIKV VLTAPGSAGQ PRSEDEDSLE EAGSPAPGPC PRSNAMLAVK HGVLYVYGGM FEAGDRQVTL SDLHCLDLHR MEAWKALVEM DPETQEWLEE TDSEEDSEEV EGAEGGVDD EDSGEESGAED

Product Details

Cross-Reactivity:	Human
Characteristics:	Antibody reactive against mammalian transfected lysate.

Target Details

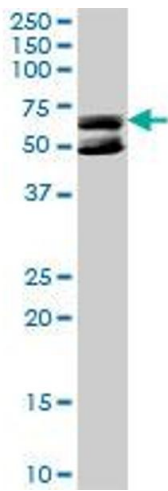
Target:	KLHDC4
Alternative Name:	KLHDC4 (KLHDC4 Products)
Background:	Full Gene Name: kelch domain containing 4 Synonyms: DKFZp434G0522,FLJ00104
Gene ID:	54758
NCBI Accession:	NM_017566

Application Details

Application Notes:	Optimal working dilution should be determined by the investigator.
Restrictions:	For Research Use only

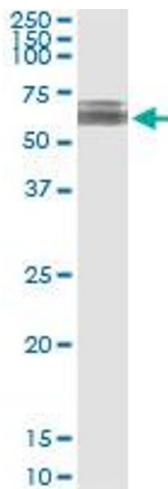
Handling

Format:	Liquid
Buffer:	No additive
Preservative:	Without preservative
Handling Advice:	Aliquot to avoid repeated freezing and thawing.
Storage:	-20 °C
Storage Comment:	Store at -20°C or lower. Aliquot to avoid repeated freezing and thawing.



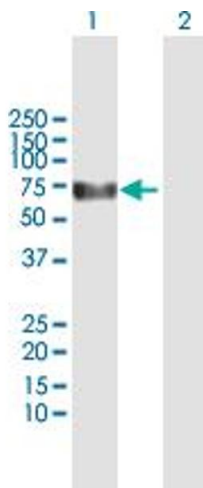
Western Blotting

Image 1. KLHDC4 MaxPab rabbit polyclonal antibody. Western Blot analysis of KLHDC4 expression in HeLa.



Immunoprecipitation

Image 2. Immunoprecipitation of KLHDC4 transfected lysate using anti-KLHDC4 MaxPab rabbit polyclonal antibody and Protein A Magnetic Bead, and immunoblotted with KLHDC4 purified MaxPab mouse polyclonal antibody (B01P).



Western Blotting

Image 3. Western Blot analysis of KLHDC4 expression in transfected 293T cell line by KLHDC4 MaxPab polyclonal antibody.

Lane 1: KLHDC4 transfected lysate(57.90 KDa).

Lane 2: Non-transfected lysate.