



[Go to Product page](#)

Datasheet for ABIN949382  
**anti-GIPC2 antibody (AA 1-315)**

2 Images

Overview

Quantity:	50 µg
Target:	GIPC2
Binding Specificity:	AA 1-315
Reactivity:	Human
Host:	Mouse
Clonality:	Polyclonal
Conjugate:	This GIPC2 antibody is un-conjugated
Application:	Western Blotting (WB)

Product Details

Purpose:	Mouse polyclonal antibody raised against a full-length human GIPC2 protein.
Immunogen:	GIPC2 (AAH36075.1, 1 a.a. ~ 315 a.a) full-length human protein.
Sequence:	MPLKLRGKKK AKSKETAGLV EGEPTGAGGG SLSASRAPAR RLVFHAQLAH GSATGRVEGF SSIQELYAQI AGAFEISPSE ILYCTLNTPK IDMERLLGGQ LGLEDIFIFAH VKGIEKEVNV YKSEDSLGLT ITDNGVGYAF IKRIKDGGVI DSVKTICVGD HIESINGENI VGWRHYDVAK KLKELKKEEL FTMKLIPEPK AFEIEPRSKA GKSSGEKIGC GRATLRLRSK GPATVEEMPS ETKAKAIEKI DDVLELYMGI RDIDLATTMF EAGKDKVNPD EFAVALDETL GDFAFPDEFV FDVWGVIGDA KRRGL
Cross-Reactivity:	Human
Characteristics:	Antibody reactive against mammalian transfected lysate.

## Target Details

Target:	GIPC2
Alternative Name:	GIPC2 ( <a href="#">GIPC2 Products</a> )
Background:	Full Gene Name: GIPC PDZ domain containing family, member 2 Synonyms: FLJ20075, SEMCAP-2, SEMCAP2
Gene ID:	54810

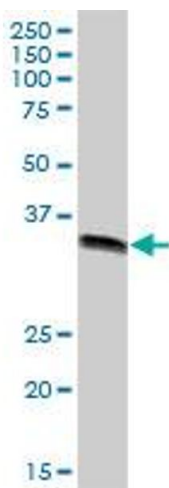
## Application Details

Application Notes:	Optimal working dilution should be determined by the investigator.
Restrictions:	For Research Use only

## Handling

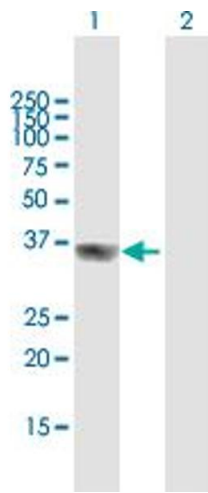
Buffer:	In 1x PBS, pH 7.4
Handling Advice:	Aliquot to avoid repeated freezing and thawing.
Storage:	-20 °C
Storage Comment:	Store at -20°C or lower. Aliquot to avoid repeated freezing and thawing.

## Images



### Western Blotting

**Image 1.** GIPC2 MaxPab polyclonal antibody. Western Blot analysis of GIPC2 expression in human colon.



### Western Blotting

**Image 2.** Western Blot analysis of GIPC2 expression in transfected 293T cell line by GIPC2 MaxPab polyclonal antibody.

Lane 1: GIPC2 transfected lysate(34.65 KDa).

Lane 2: Non-transfected lysate.