



[Go to Product page](#)

Datasheet for ABIN949387

anti-MS4A12 antibody (AA 1-267)

2 Images

Overview

Quantity:	50 µg
Target:	MS4A12
Binding Specificity:	AA 1-267
Reactivity:	Human
Host:	Mouse
Clonality:	Polyclonal
Conjugate:	This MS4A12 antibody is un-conjugated
Application:	Western Blotting (WB)

Product Details

Purpose:	Mouse polyclonal antibody raised against a full-length human MS4A12 protein.
Immunogen:	MS4A12 (AAH29793.1, 1 a.a. ~ 267 a.a) full-length human protein.
Sequence:	MMSKPTSHA EVNETIPNPY PPSSFMAPGF QQPLGSINLE NQAQGAQRAQ PYGITSPGIF ASSQPGQGNI QMINPSVGTA VMNFKEEAKA LGVIQIMVGL MHIGFGIVLC LISFSFREV GFASTAVIGG YPFWGGLSFI ISGSLSVSAS KLSRCLVKG SLGMNIVSSI LAFIGVILL VDMCINGVAG QDYWAVLSGK GISATLMIFS LLEFFVACAT AHFANQANTT TNMSVLVIPN MYESNPVTPA SSSAPPRCNN YSANAPK
Cross-Reactivity:	Human
Characteristics:	Antibody reactive against mammalian transfected lysate.

Target Details

Target:	MS4A12
Alternative Name:	MS4A12 (MS4A12 Products)
Background:	Full Gene Name: membrane-spanning 4-domains, subfamily A, member 12 Synonyms: Ms4a10
Gene ID:	54860

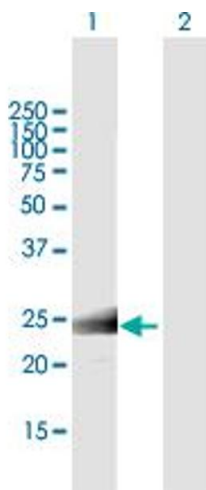
Application Details

Application Notes:	Optimal working dilution should be determined by the investigator.
Restrictions:	For Research Use only

Handling

Buffer:	In 1x PBS, pH 7.4
Handling Advice:	Aliquot to avoid repeated freezing and thawing.
Storage:	-20 °C
Storage Comment:	Store at -20°C or lower. Aliquot to avoid repeated freezing and thawing.

Images

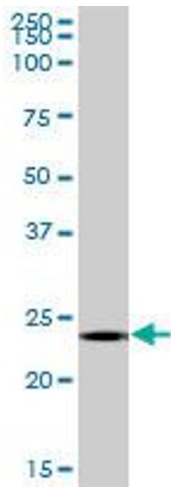


Western Blotting

Image 1. Western Blot analysis of MS4A12 expression in transfected 293T cell line by MS4A12 MaxPab polyclonal antibody.

Lane 1: MS4A12 transfected lysate(29.37 KDa).

Lane 2: Non-transfected lysate.



Western Blotting

Image 2. MS4A12 MaxPab polyclonal antibody. Western Blot analysis of MS4A12 expression in human colon.