

Datasheet for ABIN949404
anti-PTCD3 antibody (AA 1-689)



[Go to Product page](#)

1 Image

Overview

Quantity:	100 µg
Target:	PTCD3
Binding Specificity:	AA 1-689
Reactivity:	Human
Host:	Rabbit
Clonality:	Polyclonal
Conjugate:	This PTCD3 antibody is un-conjugated
Application:	Western Blotting (WB)

Product Details

Purpose:	Rabbit polyclonal antibody raised against a full-length human PTCD3 protein.
Immunogen:	PTCD3 (NP_060422.4, 1 a.a. ~ 689 a.a) full-length human protein.
Sequence:	MAVVS AVRWL GLRSRLGQPL TGR RAGLCEQ ARSCRFYSGS ATLSKVEGTD VTGIEEVVIP KKKTW DQKAVV LQALASTVNR DTTAVPYVFQ DDPYLMPASS LESRSFLLAK KSGENVAKFI INSYPKYFQK DIAEPHIPCL MPEYFEPQIK DISEAALKER IELRKVKASV DMFDQLLQAG TTVSLETTNS LLDLLCYGQD QEPSTDYHFQ QTGQSEALEE ENDETSRRKA GHQFGVTWRA KNNAERIFSL MPEKNEHSYC TMIRGMVKHR AYEQALNLYT ELLNNRLHAD VYTFNALIEA TVCAINEKFE EKWSKILELL RHMVAQKVKP NLQTFNTILK CLRRFHVFAR SPALQVIREM KAIGIEPSLA TYHHIIRLFD QPGDPLKRSS FIIYDIMNEL MGKRFSPKDP DDDKFFQSAM SICSSLRDLE LAYQVHGLLK TGDNWKFIGP DQHRNFYYSK FFDLICLMEQ IDVTLKWYED LIPSAYFPHS QTMIHLLQAL DVANRLEVIP KIWKDSKEYG HTFRSDLREE ILMLMARDKH PPELQVAFAD CAADIKSAYE SQPIRQTAQD WPATSLNCIA ILFLRAGRTQ EAWKMLGLFR

Product Details

KHNKIPRSEL LNELMDSAKV SNSPSQAIEV VELASAFSLP ICEGLTQRVM SDFAINQEQK
EALSNTALT SDSDTDSSSD SDSDTSEGK

Cross-Reactivity: Human

Characteristics: Antibody reactive against mammalian transfected lysate.

Target Details

Target: PTCD3

Alternative Name: PTCD3 ([PTCD3 Products](#))

Background: Full Gene Name: Pentatricopeptide repeat domain 3
Synonyms: DKFZp666K071,FLJ20758

Gene ID: 55037

NCBI Accession: [NM_017952](#)

Application Details

Application Notes: Optimal working dilution should be determined by the investigator.

Restrictions: For Research Use only

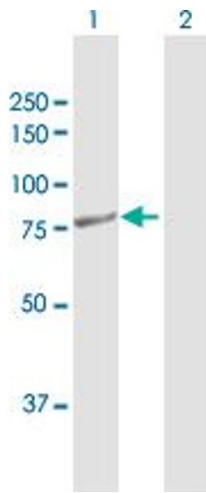
Handling

Buffer: In 1x PBS, pH 7.4

Handling Advice: Aliquot to avoid repeated freezing and thawing.

Storage: -20 °C

Storage Comment: Store at -20°C or lower. Aliquot to avoid repeated freezing and thawing.



Western Blotting

Image 1. Western Blot analysis of PTCD3 expression in transfected 293T cell line by PTCD3 MaxPab polyclonal antibody.

Lane 1: PTCD3 transfected lysate(78.50 KDa).

Lane 2: Non-transfected lysate.