



[Go to Product page](#)

Datasheet for ABIN949408
anti-ZCWPW1 antibody (AA 1-477)

1 Image

Overview

Quantity:	50 µg
Target:	ZCWPW1
Binding Specificity:	AA 1-477
Reactivity:	Human
Host:	Mouse
Clonality:	Polyclonal
Conjugate:	This ZCWPW1 antibody is un-conjugated
Application:	Western Blotting (WB)

Product Details

Purpose:	Mouse polyclonal antibody raised against a full-length human ZCWPW1 protein.
Immunogen:	ZCWPW1 (AAH02725.1, 1 a.a. ~ 477 a.a) full-length human protein.
Sequence:	MGSGLDFAET SCAQPVVSTQ SDKEPGITAS AADTDNANGE EVPHTQEISV SWEGEAAPEI RTSKLGQPDP APSKKKSNRL TLSKRKKEAQ DEKVEKTQGG HEHRQEDRLK KTVQDHSQIR DQQKGEISGF GQCLVWVQCS FPNCGKWRRL CGNIDPSVLP DNWSCDQNTD VQYNRCDIPE ETWTGLESDV AYASYIPGSI IWAKQYGYPW WPGMIESDPD LGEYFLFTSH LDSLPSKYHV TFFGETVSRA WIPVNMLKNF QELSLELSVM KKRRNDCSQK LGVALMMAQE AEQISIQERV NLFGFWSRFN GSNSNGERKD LQLSGLNSPG SCLEKKEKEE ELEKEEGEKT DPILPIRKRV KIQTQKTKPR GPKKKFKAPQ SKALAASFSE GKEVRTVPKN LGLSACKGAC PSSAKEEPRH REPLTQEAGS VPLEDEASSD LDLEQLMEDV GRELGQSGEL QHSNSDGEDF PVALFGK
Cross-Reactivity:	Human

Product Details

Characteristics: Antibody reactive against mammalian transfected lysate.

Target Details

Target: ZCWPW1

Alternative Name: ZCWPW1 ([ZCWPW1 Products](#))

Background: Full Gene Name: zinc finger, CW type with PWWP domain 1
Synonyms: DKFZp434N0510,FLJ10057,ZCW1

Gene ID: 55063

Application Details

Application Notes: Optimal working dilution should be determined by the investigator.

Restrictions: For Research Use only

Handling

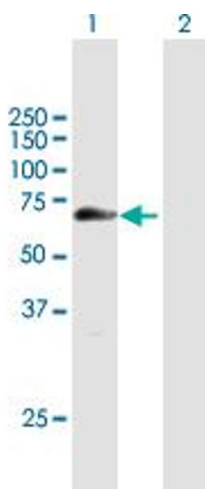
Buffer: In 1x PBS, pH 7.4

Handling Advice: Aliquot to avoid repeated freezing and thawing.

Storage: -20 °C

Storage Comment: Store at -20°C or lower. Aliquot to avoid repeated freezing and thawing.

Images



Western Blotting

Image 1. Western Blot analysis of ZCWPW1 expression in transfected 293T cell line by ZCWPW1 MaxPab polyclonal antibody.

Lane 1: ZCWPW1 transfected lysate(52.47 KDa).

Lane 2: Non-transfected lysate.