



[Go to Product page](#)

Datasheet for ABIN949429

anti-Polybromo 1 antibody (AA 1-306)

4 Images

Overview

Quantity:	50 µg
Target:	Polybromo 1 (PBRM1)
Binding Specificity:	AA 1-306
Reactivity:	Human
Host:	Mouse
Clonality:	Polyclonal
Conjugate:	This Polybromo 1 antibody is un-conjugated
Application:	Western Blotting (WB), Immunofluorescence (IF)

Product Details

Purpose:	Mouse polyclonal antibody raised against a full-length human PBRM1 protein.
Immunogen:	PBRM1 (AAH15323.1, 1 a.a. ~ 306 a.a) full-length human protein.
Sequence:	MGEEDSEVIE PPSLPQLQTP LASELDLMPY TPPQSTPKSA KGS AKKEGSK RKINMSGYIL FSSEMRRAVIK AQHPDYDFGE LSRLVGTEWR NLETAKKA EY EGMMGGYPPG LPPLQG PVDG LVSMGSMQPL HPGGPPPHHL PPGVPLPGI PPPGVMNQGV APMVGTPAPG GSPYGQQVGV LGPPGQQAPP PYPGPHPAGP PVIQQPTTPM FVAPPK TQR LLHSEAYLKY IEGLSAESNS ISKWDQTLAA RRRDVHLSKE QESRLPSHWL KSKGAHTTMA DALWRLRDL M LRDTLNIRQA YNLENV
Cross-Reactivity:	Human
Characteristics:	Antibody reactive against mammalian transfected lysate.

Target Details

Target:	Polybromo 1 (PBRM1)
Alternative Name:	PBRM1 (PBRM1 Products)
Background:	Full Gene Name: polybromo 1 Synonyms: BAF180,MGC156155,MGC156156,PB1
Gene ID:	55193

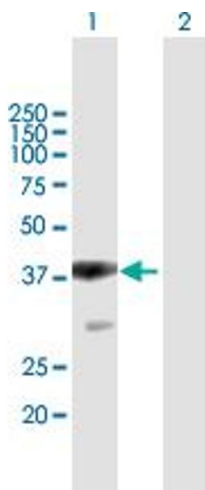
Application Details

Application Notes:	Optimal working dilution should be determined by the investigator.
Restrictions:	For Research Use only

Handling

Buffer:	In 1x PBS, pH 7.4
Handling Advice:	Aliquot to avoid repeated freezing and thawing.
Storage:	-20 °C
Storage Comment:	Store at -20°C or lower. Aliquot to avoid repeated freezing and thawing.

Images

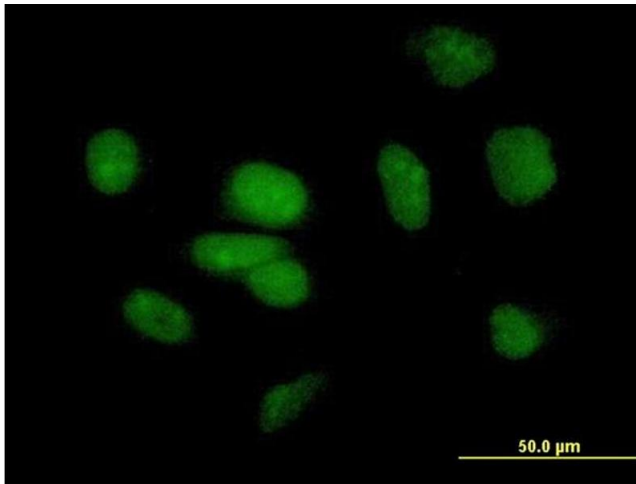


Western Blotting

Image 1. Western Blot analysis of PBRM1 expression in transfected 293T cell line by PBRM1 MaxPab polyclonal antibody.

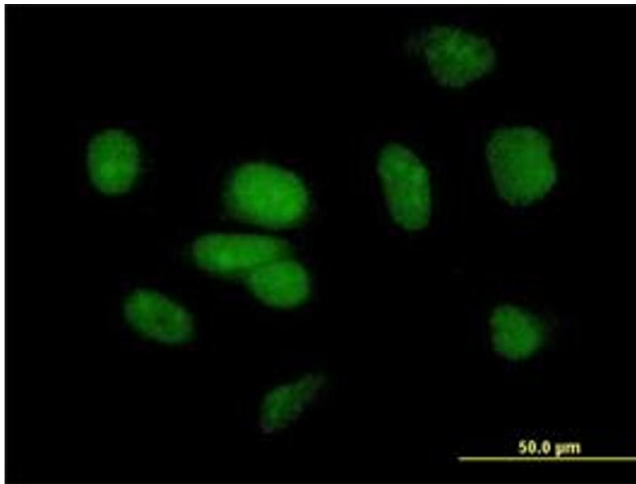
Lane 1: PB1 transfected lysate(33.66 KDa).

Lane 2: Non-transfected lysate.



Immunofluorescence

Image 2. Immunofluorescence of purified MaxPab antibody to PB1 on HeLa cell. [antibody concentration 10 ug/ml]



Immunofluorescence

Image 3. Immunofluorescence of purified MaxPab antibody to PB1 on HeLa cell. (antibody concentration 10 μg/mL)

Please check the [product details page](#) for more images. Overall 4 images are available for ABIN949429.