



Datasheet for ABIN94943

anti-Alkaline Phosphatase antibody



[Go to Product page](#)

1 Image

Overview

Quantity:	100 µg
Target:	Alkaline Phosphatase (ALP)
Reactivity:	E. coli
Host:	Rabbit
Clonality:	Polyclonal
Conjugate:	This Alkaline Phosphatase antibody is un-conjugated
Application:	Western Blotting (WB), ELISA

Product Details

Immunogen:	Alkaline Phosphatase [E.coli] Immunogen Type: Native Protein
Isotype:	IgG
Cross-Reactivity (Details):	Cross reactivity against Alkaline Phosphatase from other tissues and species may occur but have not been specifically determined. Some minimal crossreactivity has been reported when lysates of cell extracts overproducing E.coli proteins are probed.
Purity:	Anti-ALKALINE PHOSPHATASE is an IgG fraction antibody purified from monospecific antiserum by a multi-step process which includes delipidation, salt fractionation and ion exchange chromatography followed by extensive dialysis against the buffer stated above. Assay by immunoelectrophoresis resulted in a single precipitin arc against anti-Rabbit Serum as well as purified and partially purified Alkaline Phosphatase [E.coli].
Endotoxin Level:	Low Endotoxin : No

Target Details

Target:	Alkaline Phosphatase (ALP)
Alternative Name:	Alkaline Phosphatase (ALP Products)
Background:	Synonyms: Akp2 antibody, ALP antibody, Nagao isozyme antibody, Placental alkaline phosphatase antibody, Placental like alkaline phosphatase antibody, PLAP 1 antibody, PLAP like antibody, Regan isozyme antibody, Kasahara isozyme antibody
Gene ID:	945041
UniProt:	P00634

Application Details

Application Notes:	<p>ALKALINE PHOSPHATASE Antibody has been assayed against 1.0 µg of Alkaline Phosphatase [E.coli] in a standard sandwich ELISA using Peroxidase conjugated Affinity Purified anti-Rabbit IgG [H&L] (Goat) code #611-1302 and (ABTS (2,2'-azino-bis-[3-ethylbenthiazoline-6-sulfonic acid]) code # ABTS-100 as a substrate for 30 minutes at room temperature. A working dilution of 1:25.000 to 1:125.000 of the reconstitution concentration is suggested for this product. A 1:10.000 dilution has been reported to be useful for the detection by immunoblot of an integral membrane protein from a gram-positive organism expressed as a LacZ/PhoA chimeric derivative in E.coli. The researcher should determine optimal titers for other applications.</p> <p>ELISA Dilution: 1:4.000 - 1:20.000</p> <p>Western Blot Dilution: 1:500 - 1:2.000</p>
--------------------	--

Restrictions:	For Research Use only
---------------	-----------------------

Handling

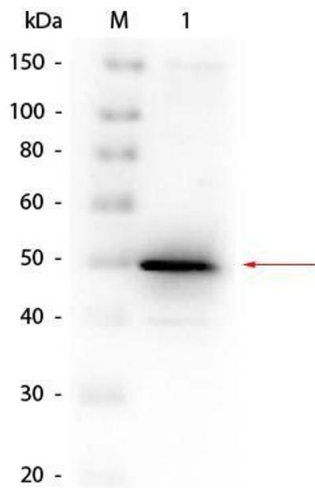
Format:	Liquid
Concentration:	1 mg/mL
Buffer:	0.02 M Potassium Phosphate, 0.15 M Sodium Chloride, pH 7.2
Handling Advice:	Store the vial at -20°C or below after dilution. Avoid cycles of freezing and thawing.
Storage:	-20 °C
Storage Comment:	Store vial at -20 °C or below prior to opening. This vial contains a relatively low volume of reagent (25 µL). To minimize loss of volume dilute 1:10 by adding 225 µL of the buffer stated above directly to the vial. Recap, mix thoroughly and briefly centrifuge to collect the volume at the bottom of the vial. Use this intermediate dilution when calculating final dilutions as

Handling

recommended below.

Expiry Date: Expiration date is one (1) year from date of opening.

Images



Western Blotting

Image 1. Western Blot of Rabbit anti-Alkaline Phosphatase (E. Coli) Antibody. Lane 1: Alkaline Phosphatase (E. Coli). Load: 50 ng per lane. Primary antibody: Rabbit anti-Alkaline Phosphatase (E. Coli) Antibody at 1:1,000 overnight at 4°C. Secondary antibody: Peroxidase Rabbit secondary antibody at 1:40,000 for 30 min at RT. Block: ABIN925618 for 30 min at RT. Predicted/Observed size: 50 kDa, 50 kDa for Alkaline Phosphatase (E. Coli).