

Datasheet for ABIN949453
anti-BATF3 antibody (AA 1-127)



[Go to Product page](#)

4 Images

Overview

Quantity:	100 µg
Target:	BATF3
Binding Specificity:	AA 1-127
Reactivity:	Human
Host:	Mouse
Clonality:	Monoclonal
Conjugate:	This BATF3 antibody is un-conjugated
Application:	ELISA, Western Blotting (WB), Immunofluorescence (IF)

Product Details

Purpose:	Mouse monoclonal antibody raised against a full-length recombinant BATF3.
Immunogen:	BATF3 (NP_061134.1, 1 a.a. ~ 127 a.a) full-length recombinant protein with GST tag. MW of the GST tag alone is 26 KDa.
Sequence:	MSQGLPAAGS VLQRSVAAPG NQPQPQQQQ SPEDDDRKVR RREKNRVAAQ RSRKKQTQKA DKLHEEYESL EQENTMLRRE IGKLTEELKH LTEALKEHEK MCPLLLCPMN FVPVPPRPDP VAGCLPR
Clone:	3H1
Isotype:	IgG2a
Cross-Reactivity:	Human
Characteristics:	Antibody Reactive Against Recombinant Protein.

Target Details

Target:	BATF3
Alternative Name:	BATF3 (BATF3 Products)
Background:	Full Gene Name: basic leucine zipper transcription factor, ATF-like 3 Synonyms: JDP1,JUNDM1,SNFT
Gene ID:	55509
NCBI Accession:	NM_018664

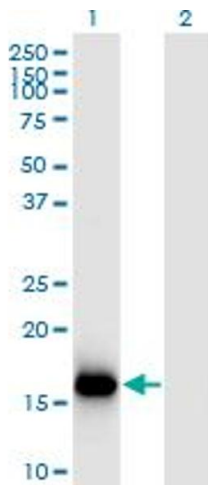
Application Details

Application Notes:	Optimal working dilution should be determined by the investigator.
Restrictions:	For Research Use only

Handling

Buffer:	In 1x PBS, pH 7.4
Handling Advice:	Aliquot to avoid repeated freezing and thawing.
Storage:	-20 °C
Storage Comment:	Store at -20°C or lower. Aliquot to avoid repeated freezing and thawing.

Images

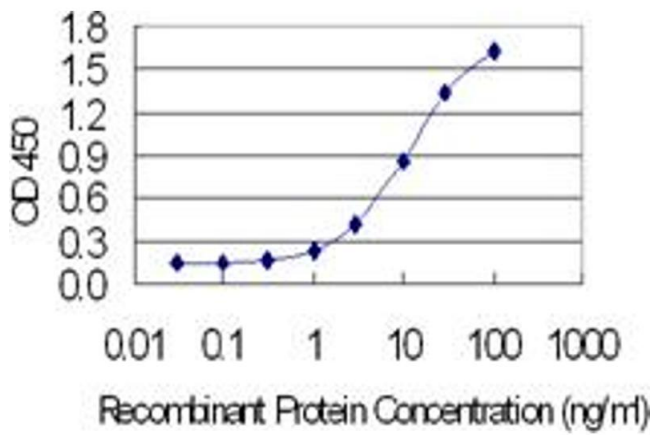


Western Blotting

Image 1. Western Blot analysis of BATF3 expression in transfected 293T cell line by BATF3 monoclonal antibody (M04), clone 3H1.

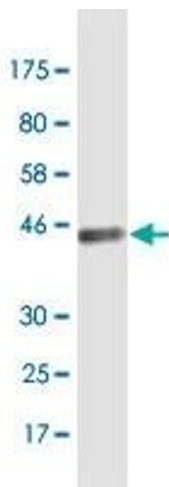
Lane 1: BATF3 transfected lysate (Predicted MW: 14.5 kDa).

Lane 2: Non-transfected lysate.



ELISA

Image 2. Detection limit for recombinant GST tagged BATF3 is 0.1 ng/ml as a capture antibody.



Western Blotting

Image 3. Western Blot detection against Immunogen (40.9 kDa).

Please check the [product details page](#) for more images. Overall 4 images are available for ABIN949453.