

Datasheet for ABIN949454  
**anti-SMPD3 antibody (AA 1-655)**



[Go to Product page](#)

2 Images

2 Publications

### Overview

Quantity:	100 µL
Target:	SMPD3
Binding Specificity:	AA 1-655
Reactivity:	Human
Host:	Rabbit
Clonality:	Polyclonal
Conjugate:	This SMPD3 antibody is un-conjugated
Application:	Western Blotting (WB), Immunoprecipitation (IP)

### Product Details

Purpose:	Rabbit polyclonal antibody raised against a full-length human SMPD3 protein.
Immunogen:	SMPD3 (NP_061137.1, 1 a.a. ~ 655 a.a) full-length human protein.
Sequence:	MVLYTTPFPN SCLSALHCVS WALIFPCYWLV DRLAASFIP TTYEKQRAD DPCCLQLLCT ALFTPIYLAL LVASLPFAFL GFLFWSP LQS ARRPIYSRL EDKGLAGGAA LLSEWKGTGP GKSFCFATAN VCLLPDSLAR VNNLFNTQAR AKEIGQRIRN GAARPQIKIY IDSPTNTSIS AASFSSLVSP QGGDGVARAV PGSIKRTASV EYKGDGGRHP GDEAANGPAS GDPVDSSSPE DACIVRIGGE EGGRPEADD PVPGGQARNG AGGGPRGQTP NHNQDGDGSG SLGSPSASRE SLVKGRAGPD TSASGEPGAN SKLLYKASV KAAAARRRRH PDEAFDHEVS AFFPANLDFL CLQEVFDKRA ATKLKEQLHG YFEYILYDVG VYGCQGCCSF KCLNSGLLFA SRYPIIMDVAY HCYPNKCNDL ALASKGALFL KVQVGSTPQD QRIVGYIACT HLHAPQEDSA IRCGQLDLLQ DWLADFRKST SSSSAANPEE LVAFDVCGD FNFNDCSSDD KLEQQHSLFT HYRDPCLRGP GEEKPWAIGT LLDTNGLYDE DVCTPDNLQK VLESEEGRRE YLAFPTSKSS GQKGRKELLK

## Product Details

---

GNRRRIDYML HAEGLCPDW KAEVEEFSFI TQLSGLTDHL PVAMRLMVSS GEEEA

Cross-Reactivity: Human

Characteristics: Antibody reactive against mammalian transfected lysate.

## Target Details

---

Target: SMPD3

Alternative Name: SMPD3 ([SMPD3 Products](#))

Background: Full Gene Name: sphingomyelin phosphodiesterase 3, neutral membrane (neutral sphingomyelinase II)

Synonyms: FLJ22593,MGC138443,NSMASE2

Gene ID: 55512

NCBI Accession: [NM\\_018667](#)

Pathways: [Hormone Transport](#)

## Application Details

---

Application Notes: Optimal working dilution should be determined by the investigator.

Restrictions: For Research Use only

## Handling

---

Format: Liquid

Buffer: No additive

Preservative: Without preservative

Handling Advice: Aliquot to avoid repeated freezing and thawing.

Storage: -20 °C

Storage Comment: Store at -20°C or lower. Aliquot to avoid repeated freezing and thawing.

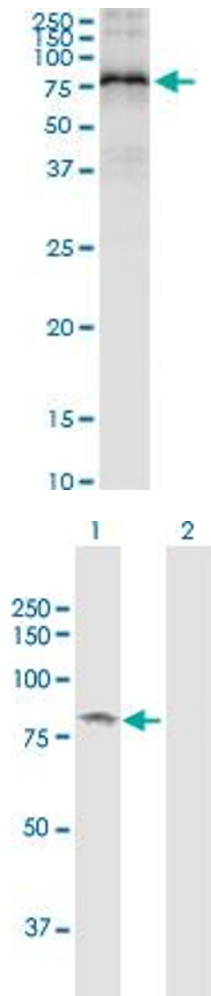
## Publications

---

Product cited in: Broner, Tropé, Reich, Davidson: "TSAP6 is a novel candidate marker of poor survival in metastatic high-grade serous carcinoma." in: **Human pathology**, Vol. 60, pp. 180-187, (2016) ([PubMed](#)).

Lee, Tan, Venkatratnam, Tan, Cui, Loh, Griffith, Tannenbaum, Chan: "Dysregulated sphingolipid metabolism in endometriosis." in: **The Journal of clinical endocrinology and metabolism**, Vol. 99, Issue 10, pp. E1913-21, (2014) ([PubMed](#)).

Images



**Immunoprecipitation**

**Image 1.** Immunoprecipitation of SMPD3 transfected lysate using anti-SMPD3 MaxPab rabbit polyclonal antibody and Protein A Magnetic Bead , and immunoblotted with SMPD3 purified MaxPab mouse polyclonal antibody (B01P) .

**Western Blotting**

**Image 2.** Western Blot analysis of SMPD3 expression in transfected 293T cell line by SMPD3 MaxPab polyclonal antibody.

Lane 1: SMPD3 transfected lysate(71.10 KDa).  
Lane 2: Non-transfected lysate.