



[Go to Product page](#)

Datasheet for ABIN949488

## anti-NSFL1C antibody (AA 1-370)

### 1 Image

#### Overview

Quantity:	100 µg
Target:	NSFL1C
Binding Specificity:	AA 1-370
Reactivity:	Human
Host:	Rabbit
Clonality:	Polyclonal
Conjugate:	This NSFL1C antibody is un-conjugated
Application:	Western Blotting (WB)

#### Product Details

Purpose:	Rabbit polyclonal antibody raised against a full-length human NSFL1C protein.
Immunogen:	NSFL1C (NP_057227.2, 1 a.a. ~ 370 a.a) full-length human protein.
Sequence:	MAAERQEALR EFVAVTGAEE DRARFFLESA GWDLQIALAS FYEDGGDEDI VTISQATPSS VSRGTAPSDN RVTSFRDLIH DQDEDEEEEEE GQRFYAGGSE RSGQQIVGPP RKKSPNELVD DLFKGAKEHG AVAVERVTKS PGETSKPRPF AGGGYRLGAA PEEESAYVAG EKROHSSQDV HVVLKLWKSG FSLDNGELRS YQDPSNAQFL ESIRRGVPA ELRRLAHGGQ VNLDMEDHRD EDFVKPKGAF KAFTGEGQKL GSTAPQVLST SSPAQAENE AKASSSILID ESEPTTNIQI RLADGGRLVQ KFNHSHRISD IRLFIVDARP AMAATSFILM TTFPNKELAD ESQTLKEANL LNAVIVQRLT
Cross-Reactivity:	Human
Characteristics:	Antibody reactive against mammalian transfected lysate.

## Target Details

Target:	NSFL1C
Alternative Name:	NSFL1C ( <a href="#">NSFL1C Products</a> )
Background:	Full Gene Name: NSFL1 (p97) cofactor (p47) Synonyms: MGC3347,UBX1,UBXD10,UBXN2C,dJ776F14.1,p47
Gene ID:	55968
NCBI Accession:	<a href="#">NM_016143</a>

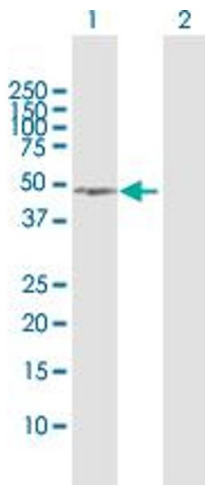
## Application Details

Application Notes:	Optimal working dilution should be determined by the investigator.
Restrictions:	For Research Use only

## Handling

Buffer:	In 1x PBS, pH 7.4
Handling Advice:	Aliquot to avoid repeated freezing and thawing.
Storage:	-20 °C
Storage Comment:	Store at -20°C or lower. Aliquot to avoid repeated freezing and thawing.

## Images



### Western Blotting

**Image 1.** Western Blot analysis of NSFL1C expression in transfected 293T cell line by NSFL1C MaxPab polyclonal antibody.

Lane 1: NSFL1C transfected lysate(40.60 KDa).

Lane 2: Non-transfected lysate.