



[Go to Product page](#)

Datasheet for ABIN949493

anti-Kelch-Like 4 antibody (AA 1-718)

3 Images

Overview

Quantity:	100 µL
Target:	Kelch-Like 4 (KLHL4)
Binding Specificity:	AA 1-718
Reactivity:	Human
Host:	Rabbit
Clonality:	Polyclonal
Conjugate:	This Kelch-Like 4 antibody is un-conjugated
Application:	Western Blotting (WB), Immunoprecipitation (IP)

Product Details

Purpose:	Rabbit polyclonal antibody raised against a full-length human KLHL4 protein.
Immunogen:	KLHL4 (NP_061990.2, 1 a.a. ~ 718 a.a) full-length human protein.
Sequence:	MSVSGKKEFD VKQILRLRWR WFSHPFQGST NTGSCLQQEG YEHRGTPVQG RLKSHSRDRN GLKKSNSPVH HNILAPVPGP APAHQRAVQN LQQHNLIVHF QANEDTPKSV PEKNLFKEAC EKRAQDLEMM ADDNIEDSTA RLDTQHSEDM NATRSEEQFH VINHAEQTLR KMENYLKEKQ LCDVLLIAGH LRIPAHRLVL SAVSDYFAAM FTNDVLEAKQ EEVRMEGVDP NALNSLVQYA YTGVLQLKED TIESLLAAAC LLQLTQVIDV CSNFLIKQLH PSNCLGIRSF GDAQGCTELL NVAHKYTMEH FIEVIKNQEF LLLPANEISK LLCSDDINVP DEETIFHALM QWVGHDVQNR QGELGMLLSY IRLPLPPQL LADLETSSMF TGDLECQKLL MEAMKYHLLP ERRSMMQSPR TKPRKSTVGA LYAVGGMDAM KGTTTIEKYD LRTNSWLHIG TMNGRRLQFG VAVIDNKLYV VGGRDGLKTL NTVECFNPVG KIWTVMPPMS THRHGLGVAT LEGPMYAVGG HDGWSYLNTV ERWDPEGRQW NYVASMSTPR STVGVALNN KLYAIGGRDG SSCLKSMEYF DPHTNKWSLC

Product Details

APMSKRRGGV GVATYNGFLY VVGGHDAPAS NHCSRLSDCV ERYDPKGDSW STVAPLSVPR
DAVAVCPLGD KLYVVGGYDG HTYLNTVESY DAQRNEWKEE VPVNIGRAGA CVVVVKLP

Cross-Reactivity: Human

Characteristics: Antibody reactive against mammalian transfected lysate.

Target Details

Target: Kelch-Like 4 (KLHL4)

Alternative Name: KLHL4 ([KLHL4 Products](#))

Background: Full Gene Name: kelch-like 4 (Drosophila)

Synonyms: DKELCHL,KHL4,KIAA1687

Gene ID: 56062

NCBI Accession: [NM_019117](#)

Application Details

Application Notes: Optimal working dilution should be determined by the investigator.

Restrictions: For Research Use only

Handling

Format: Liquid

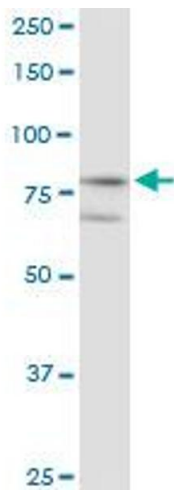
Buffer: No additive

Preservative: Without preservative

Handling Advice: Aliquot to avoid repeated freezing and thawing.

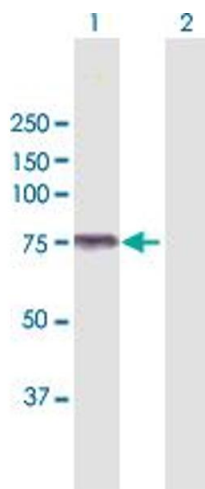
Storage: -20 °C

Storage Comment: Store at -20°C or lower. Aliquot to avoid repeated freezing and thawing.



Immunoprecipitation

Image 1. Immunoprecipitation of KLHL4 transfected lysate using anti-KLHL4 MaxPab rabbit polyclonal antibody and Protein A Magnetic Bead , and immunoblotted with KLHL4 purified MaxPab mouse polyclonal antibody (B01P) .

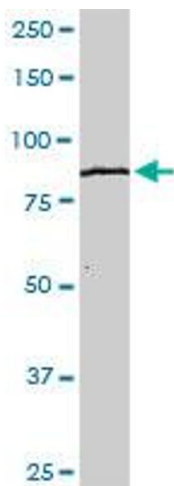


Western Blotting

Image 2. Western Blot analysis of KLHL4 expression in transfected 293T cell line by KLHL4 MaxPab polyclonal antibody.

Lane 1: KLHL4 transfected lysate(80.2 KDa).

Lane 2: Non-transfected lysate.



Western Blotting

Image 3. KLHL4 MaxPab rabbit polyclonal antibody. Western Blot analysis of KLHL4 expression in human placenta.