



[Go to Product page](#)

Datasheet for ABIN949519
anti-PLXDC1 antibody (AA 1-500)

1 Image

Overview

Quantity:	50 µg
Target:	PLXDC1
Binding Specificity:	AA 1-500
Reactivity:	Human
Host:	Mouse
Clonality:	Polyclonal
Conjugate:	This PLXDC1 antibody is un-conjugated
Application:	Western Blotting (WB)

Product Details

Purpose:	Mouse polyclonal antibody raised against a full-length human PLXDC1 protein.
Immunogen:	PLXDC1 (AAH36059.1, 1 a.a. ~ 500 a.a) full-length human protein.
Sequence:	MRGELWLLVL VLREAARALS PPGGAGHDEG PGSGWAAKGT VRGWNRRARE SPGHVSEADR TQLSQDLGGG TLAMDTLPDN RTRVVEDNHS YYVSRLYGPS EPHSRELWVD VAEANRSQVK IHTILSNTHR QASRVLSFD FPFYGHPLRQ ITMATGGFIF MGDVIHRMLT ATQYVAPLMA NFNPGYSDNS TVVYFDNGTV FVVQWDHVYL QGWEDKGSFT FQAALHHDGR IVFAYKEIPM SVPEISSSQH PVKTGLSDF MILNPSPDVP ESRRSIFEY HRIELDPSKV TSMSAVEFTP LPTCLQHRSC DACMSSDLTF NCSWCHVLQR CSSGFDRYRQ EWMDYGCAQE AEGRMCEDFQ DEDHDSASPD TSFSPYDGD LTTSSSLFID SLTTEDDTKL NPYAGGDGLQ NNLSPKTKGT PVHLGTIVGI VLAVLLVAAI ILAGIYINGH PTSNAALFFI ERRPHHPAM KFRSHPDHST YAEVEPSGHE KEGFMEAEQC

Product Details

Cross-Reactivity:	Human
Characteristics:	Antibody reactive against mammalian transfected lysate.

Target Details

Target:	PLXDC1
Alternative Name:	PLXDC1 (PLXDC1 Products)
Background:	Full Gene Name: plexin domain containing 1 Synonyms: DKFZp686F0937,FLJ36270,FLJ45632,TEM3,TEM7
Gene ID:	57125

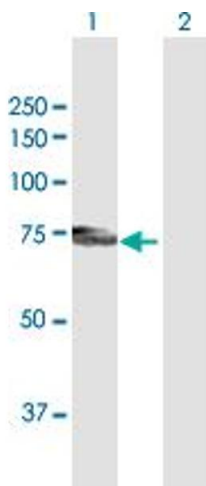
Application Details

Application Notes:	Optimal working dilution should be determined by the investigator.
Restrictions:	For Research Use only

Handling

Buffer:	In 1x PBS, pH 7.4
Handling Advice:	Aliquot to avoid repeated freezing and thawing.
Storage:	-20 °C
Storage Comment:	Store at -20°C or lower. Aliquot to avoid repeated freezing and thawing.

Images



Western Blotting

Image 1. Western Blot analysis of PLXDC1 expression in transfected 293T cell line by PLXDC1 MaxPab polyclonal antibody.

Lane 1: PLXDC1 transfected lysate(55 KDa).

Lane 2: Non-transfected lysate.