

Datasheet for ABIN949525  
**anti-PELI2 antibody (AA 1-420)**



[Go to Product page](#)

1 Image

## Overview

Quantity:	50 µg
Target:	PELI2
Binding Specificity:	AA 1-420
Reactivity:	Human
Host:	Mouse
Clonality:	Polyclonal
Conjugate:	This PELI2 antibody is un-conjugated
Application:	Western Blotting (WB)

## Product Details

Purpose:	Mouse polyclonal antibody raised against a full-length human PELI2 protein.
Immunogen:	PELI2 (NP_067078.1, 1 a.a. ~ 420 a.a) full-length human protein.
Sequence:	MFSPGQEEHC APNKEPVKYG ELVVLGYNGA LPNGDRGRRK SRFALYKRPK ANGVKPSTVH VISTPQASKA ISCKGQHSIS YTLARNQTVV VEYTHDKDTD MFQVGRSTES PIDFVVTDTI SGSQNTDEAQ ITQSTISRFA CRIVCDRNEP YARIFAAGF DSSKNIFLGE KAAKWKNPDG HMDGLTTNGV LVMHPRGGFT EESQPGVWRE ISVCGDVYTL RETRSAQQRG KLVESETNVL QDGLIDLCLG ATLLWRTADG LFHTPTQKHI EALRQEINAA RPQCPVGLNT LAFPSINRKE VVEEKQPWAY LSCGHVHGYH NWGHRSDTEA NERECPMCRT VGPYVPLWLG CEAGFYVDAG PPTHAFTPCG HVCSEKSAKY WSQIPLPHGT HAFHAACPFC ATQLVGEQNC IKLIFQGPID
Cross-Reactivity:	Human
Characteristics:	Antibody reactive against mammalian transfected lysate.

## Target Details

Target:	PELI2
Alternative Name:	PELI2 (PELI2 Products)
Background:	Full Gene Name: pellino homolog 2 (Drosophila) Synonyms:
Gene ID:	57161
NCBI Accession:	NM_021255
Pathways:	Activation of Innate immune Response, Toll-Like Receptors Cascades

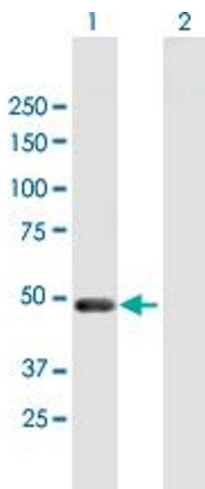
## Application Details

Application Notes:	Optimal working dilution should be determined by the investigator.
Restrictions:	For Research Use only

## Handling

Buffer:	In 1x PBS, pH 7.4
Handling Advice:	Aliquot to avoid repeated freezing and thawing.
Storage:	-20 °C
Storage Comment:	Store at -20°C or lower. Aliquot to avoid repeated freezing and thawing.

## Images



### Western Blotting

**Image 1.** Western Blot analysis of PELI2 expression in transfected 293T cell line by PELI2 MaxPab polyclonal antibody.

Lane 1: PELI2 transfected lysate(46.2 KDa).

Lane 2: Non-transfected lysate.